



Review article

Translational potential of astrocytes in brain disorders

Alexei Verkhratsky^{a,b,c,**}, Luca Steardo^d, Vladimir Parpura^e, Vedrana Montana^{f,*}^a Faculty of Life Science, The University of Manchester, Manchester, UK^b Achucarro Center for Neuroscience, IKERBASQUE, Basque Foundation for Science, Bilbao, Spain^c University of Nizhny Novgorod, Nizhny Novgorod, Russia^d Department of Psychiatry, University of Naples SUN, Largo Madonna delle Grazie, Naples, Italy^e Department of Neurobiology, Center for Glial Biology in Medicine and Atomic Force Microscopy & Nanotechnology Laboratories, University of Alabama at Birmingham, Birmingham, AL, USA^f Department of Biotechnology, University of Rijeka, Rijeka, Croatia

ARTICLE INFO

Article history:

Received 9 June 2015

Received in revised form 3 September 2015

Accepted 8 September 2015

Available online 16 September 2015

Keywords:

Astrocytes

Morpho-functional changes

Pathology

Potential therapeutic targets

ABSTRACT

Fundamentally, all brain disorders can be broadly defined as the homeostatic failure of this organ. As the brain is composed of many different cells types, including but not limited to neurons and glia, it is only logical that all the cell types/constituents could play a role in health and disease. Yet, for a long time the sole conceptualization of brain pathology was focused on the well-being of neurons. Here, we challenge this neuron-centric view and present neuroglia as a key element in neuropathology, a process that has a toll on astrocytes, which undergo complex morpho-functional changes that can in turn affect the course of the disorder. Such changes can be grossly identified as reactivity, atrophy with loss of function and pathological remodeling. We outline the pathogenic potential of astrocytes in variety of disorders, ranging from neurotrauma, infection, toxic damage, stroke, epilepsy, neurodevelopmental, neurodegenerative and psychiatric disorders, Alexander disease to neoplastic changes seen in gliomas. We hope that in near future we would witness glial-based translational medicine with generation of deliverables for the containment and cure of disorders. We point out that such a task will require a holistic and multi-disciplinary approach that will take in consideration the concerted operation of all the cell types in the brain.

© 2015 Elsevier Ltd. All rights reserved.

Contents

1. Astrogliopathology: reactivity, atrophy with loss of function and pathological remodeling	189
2. Neurotrauma	190
3. Infectious diseases of the CNS.	190
4. Toxic damage to the brain.	191

Abbreviations: AD, Alzheimer's disease; ALS, amyotrophic lateral sclerosis; APP, amyloid precursor protein; AS, α -synuclein; ASD, Autism spectrum disorder; ADK, adenosine kinase; ATP, adenosine triphosphate; AxD, Alexander disease; CD81, Cluster of Differentiation 81; CMV, cytomegalovirus; CNO, clozapine N-oxide; CNS, central nervous system; CSC, cancer stem cell; CXCL-1, chemokine (C-X-C motif) ligand 1; DISC1, Disrupted-In-Schizophrenia-1; DREADD, designer receptor exclusively activated by a designer drug; DS, Down syndrome; EAST, epilepsy – ataxia – sensorineural deafness – salt-wasting renal tubulopathy; fALS, familial ALS; FDA, The Food and Drug Administration; FTD, fronto-temporal dementia; FUS, fused in sarcoma; GABA, γ -amino butyric acid; GBM, glioblastoma multiforme; GFAP, glial fibrillary acidic protein; GS, glutamine synthetase; HD, Huntington's disease; HRAS, Harvey rat sarcoma viral oncogene homolog; hSOD1, human superoxide dismutase; HSV1, herpes simplex virus 1; InsP₃, inositol 1,4,5 trisphosphate; IL, interleukin; iNOS, inducible nitric oxide synthetase; JNK, c-Jun N-terminal kinase; L-AAA, L-alpha-aminoadipic acid; mGluR, metabotropic glutamate receptor; mhnt, mutant huntingtin protein; MAO-B, monoamine-oxidase B; MPTP, 1-methyl-4-phenyl-1,2,3,6-tetrahydropyridine; MSA, multiple system atrophy; NFAT, immune/inflammatory calcineurin/nuclear factor of activated T-cells; NAc, the nucleus accumbens core; NMDA, N-methyl D-aspartate; NOD2, nucleotide-binding oligomerization domain containing protein 2; PD, Parkinson's disease; PS, presenilin; Ras, rat sarcoma; ROS, reactive oxygen species; SeSAME, seizures – sensorineural deafness – ataxia – mental retardation – electrolyte imbalance; SNARE, soluble N-ethylmaleimide-sensitive fusion protein attachment protein receptor; TARDBP, TAR DNA binding protein; TNF- α , tumor necrosis factor α ; TRP, transient receptor potential.

* Corresponding author at: Department of Biotechnology, University of Rijeka, Rijeka, Croatia.

** Corresponding author at: Faculty of Life Science, The University of Manchester, Manchester, UK.

E-mail addresses: Alexej.Verkhatsky@manchester.ac.uk (A. Verkhratsky), vedranam@biotech.uniri.hr (V. Montana).

4.1.	Heavy metal toxic encephalopathies	191
4.2.	Hyperammonemia and hepatic encephalopathy	191
5.	Astroglipathology in stroke	191
6.	Epilepsy	192
7.	Neurodevelopmental disorders	193
7.1.	Autism spectrum disorders (ASD)	193
7.2.	Down syndrome	193
7.3.	Fragile X syndrome	193
7.4.	Costello syndrome	193
8.	Astroglia in major neuropsychiatric diseases	193
8.1.	Mood disorders	193
8.2.	Schizophrenia	193
8.3.	Addictive disorders	194
9.	Neurodegenerative diseases	194
9.1.	Alzheimer's disease	194
9.2.	Amyotrophic lateral sclerosis	196
9.3.	Huntington's disease	196
9.4.	Parkinson disease	197
10.	Alexander disease	197
11.	Glioma	198
12.	Concluding remarks	199
	Acknowledgements	199
	References	199

1. Astroglipathology: reactivity, atrophy with loss of function and pathological remodeling

Fundamentally, all diseases, including neurological disorders can be broadly defined as homeostatic failures within tissue, organ or a system. For a long time neuropathology was dominated by the neuron-centric views with all conceptualization of brain pathology being focused on neurons, on their survival or death. The neuron-centricity is now being challenged and neuroglia begins to be regarded as a central element of neuropathology (Burda and Sofroniew, 2014; Giaume et al., 2007; Nedergaard et al., 2010; Parpura et al., 2012; Sofroniew, 2009).

Astroglia is the name for a highly heterogeneous population of neural cells, populating the grey and white matter of the central nervous system (CNS), which are chiefly responsible for the homeostasis of the neural tissue and contribute to its defense in pathology (Kettenmann and Ransom, 2013; Verkhratsky and Butt, 2013). Astroglial expression of a wide array of receptors for neurotransmitters and neurohormones is regulated by the neurochemical environment and, as a rule, astrocytes possess receptors allowing them to sense neighboring neuronal transmission (Parpura and Verkhratsky, 2012a). Activation of these receptors triggers dynamic changes of concentration of ions (mainly Ca^{2+} and Na^{+}) in the astroglial cytoplasm, which regulate astroglial functions and serve as a substrate for astroglial excitability (Aguilhon et al., 2008; Kirischuk et al., 2012; Parpura and Verkhratsky, 2012b, 2013; Rose and Karus, 2013; Verkhratsky et al., 2014c; Zorec et al., 2012). The functions of astrocytes are highly diverse and are regionally specialized (Anderson et al., 2014; Chaboub and Deneen, 2012; Matyash and Kettenmann, 2010; Oberheim et al., 2012; Parpura et al., 2012; Schitine et al., 2015). In the gray matter astrocytes divide (through the process known as tiling that starts in the late embryogenesis) the parenchyma into relatively independent units, traditionally known as neurovascular units and recently often called astroglial-vascular units, that integrate, within an individual astroglial territorial domain, neural and vascular elements (Bushong et al., 2002; Iadecola and Nedergaard, 2007; Nedergaard et al., 2003). By employing a variety of molecular mechanisms (exocytosis, membrane transporters or diffusion through plasmalemmal channels) astrocytes secrete numerous neurotransmitters, neurohormones

and trophic factors (Malarkey and Parpura, 2008; Parpura et al., 2011) that regulate synapse formation and maintenance, modulate synaptic transmission and synchronization of neuronal networks and signal to other (in addition to neurons) cellular elements (e.g., microglia, oligodendroglia, pericytes, and endothelial cells). At the level of the whole brain, astrocytes form the glia limitans (i.e., a thin barrier surrounding the brain and spinal cord and containing astrocytic end-feet associated with the parenchymal basal lamina) and regulate emergence and function of brain-blood and brain-cerebro-spinal fluid barriers and contribute to overall brain metabolism being the sole producers and repository of glycogen (Kettenmann and Ransom, 2013; Verkhratsky and Butt, 2013).

Cellular pathophysiology of the CNS involves all cells that constitute brain tissue, with each cell type playing its defined function (Burda and Sofroniew, 2014). Astrocytes contribute to virtually all neuropathological conditions. First and foremost, astrocytes maintain CNS homeostasis; the homeostatic function of astroglia is linked to their neuroprotective capabilities. Insults to the CNS regardless of their etiology put the strain on the organ homeostasis and it is astrocytes that through dedicated molecular cascades protect neurons against glutamate excitotoxicity, extracellular K^{+} overload, and reactive oxygen species (ROS). Astrocytes also supply stressed neurons with energy substrates. The loss of these critical astroglial functions permits and exacerbates progression of various diseases, from which amyotrophic lateral sclerosis, toxic encephalopathies and neurodegeneration are prominent examples (Verkhratsky et al., 2014a). In addition, astrocytes are capable of mounting a specific defensive response, generally known as reactive astrogliosis (Fig. 1), a multicomponent and complex remodeling of astroglia triggered by lesions to the CNS (Burda and Sofroniew, 2014; Pekny et al., 2014; Sofroniew, 2009; Verkhratsky et al., 2014b). Astroglial phenotypes are yet to be investigated in detail, although the context specificity becomes increasingly clear. Transcriptomes of reactive astrocytes activated by two distinct stimuli, the ischemic stroke and injection of bacterial lipopolysaccharide, showed remarkable difference, indicating that the stress signal defines characteristic of astroglial program (Zamanian et al., 2012). Astroglial is an important component of cellular pathophysiology and its suppression generally aggravates neuropathology.

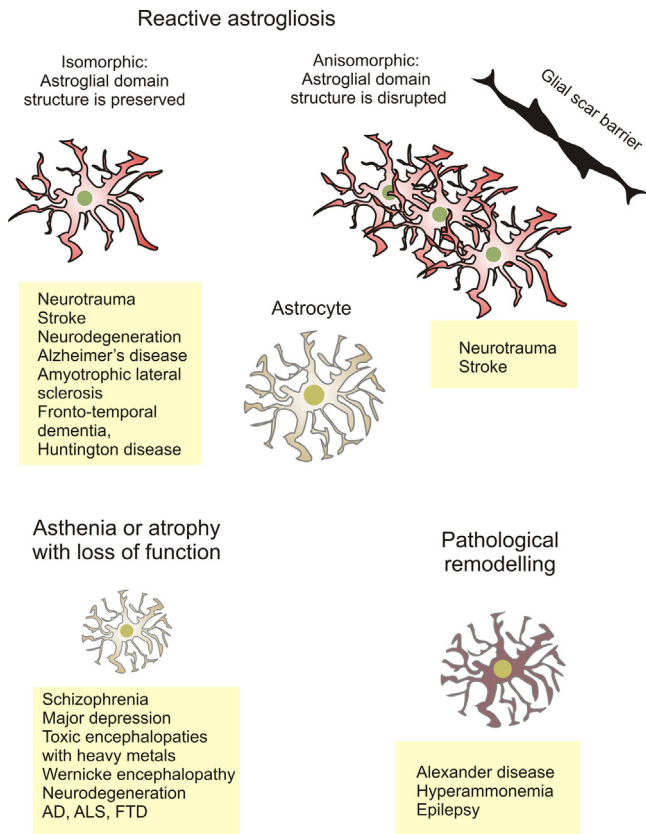


Fig. 1. Astroglipathology. Astrocytes undergo morpho-functional changes in the brain pathology (see text for details). AD, Alzheimer's disease; ALS, amyotrophic lateral sclerosis; FTD, fronto-temporal dementia.

Besides reactivity, however, numerous neurological diseases are associated with astroglial degeneration, astroglial atrophy and functional asthenia (Fig. 1). Astroglial atrophy and loss of function has been documented in many neurological diseases, including psychiatric disorders and neurodegeneration (Hazell, 2009; Rajkowska and Stockmeier, 2013; Rossi et al., 2008; Verkhratsky et al., 2014a, 2014d). Atrophy of astrocytes leads to a decrease in synaptic coverage by astrocytic perisynaptic membranes, decrease in astroglial homeostatic support (which is often manifested through compromised uptake of glutamate, that in turn affects neurotransmission and promotes excitotoxicity) and decrease in astroglia-dependent neuroprotection. In pathological conditions, astroglial asthenia may result in failed astroglial reaction, which in turn exacerbates the evolution of neuropathology (Verkhratsky et al., 2014b). Finally, astrocytes in various neurological contexts may undergo pathological remodeling (Fig. 1). For example, in Alexander disease the expression of mutated glial fibrillary acidic protein (GFAP) causes severe leukomalacia (Messing et al., 2012) and profound remodeling of astroglial homeostatic cascades is seen in hyperammonemia (Kelly et al., 2009; Montana et al., 2014).

2. Neurotrauma

Traumatic lesions to both the brain and spinal cord vary substantially in their form (i.e., penetrating wounds or concussions; the later when occurring in the cervical spinal cord is known medically as cervical cord neurapraxia), volume (focal or diffuse), severity and anatomical localization. These mechanistic differences define cellular pathology by affecting different types of cells in the nervous tissue, by damaging the blood–brain barrier, inflicting hemorrhages, inducing secondary infections, etc.

Astroglial reactivity dominates the response of neural tissue to all forms of neurotrauma, although the resulting activated gliotic phenotypes are highly heterogeneous depending on the pathological context (Burda et al., 2015); furthermore, astroglial response is graded by the severity of the insult and proximity to the lesion. Initiation of astroglial gliotic program is likely to involve a massive release of adenosine triphosphate (ATP) from cells within the damaged areas with subsequent activation of astroglial Ca^{2+} signaling mediated by inositol 1,4,5 trisphosphate (InsP_3)-induced Ca^{2+} release from the endoplasmic reticulum (Huang et al., 2012; Roth et al., 2014). Genetic deletion of InsP_3 receptors type 2 (which are predominantly expressed in astrocytes) suppresses astroglial response (Kanemaru et al., 2013). Extracellular ATP signaling is also instrumental for the activation of microglia (Kettenmann et al., 2011), with microgliosis representing the second arm of the gliotic response to traumatic lesions of the brain.

Reactive astrocytes serve numerous functions in protecting the CNS against neurotrauma. In focal traumatic injuries reactive astrocytes limit the lesion by forming the glial scar barrier around the areas of damage (Fig. 1); inhibition of astroglial response and suppression of scar formation substantially exacerbates pathology and increases the ensuing neurological deficit (Sofroniew, 2005). Reactive astroglial phenotypes, however, are multiple and they depend on the distance from the lesion core. In the very vicinity of the wound astroglial cells proliferate, undergo anisomorphic gliosis and form the scar; astrocytes proximal to the traumatic injury react with hypertrophy and biochemical remodeling without changing their territorial organization, i.e., undergo isomorphic gliosis (Fig. 1). The multitude of reactive phenotypes reflects multiple functional outcomes of reactivity. In the context of neurotrauma astrocytes not only isolate the damage with a scar but also regulate inflammatory response, provide for homeostatic protection of the nervous tissue (through removing glutamate, buffering K^+ , releasing ROS scavengers, etc.) and regulate post-traumatic remodeling of synaptic networks. Furthermore, astrocytes can secrete molecules that reduce the blood–brain barrier permeability and facilitate its repair. Finally, reactive astrocytes are instrumental for post-traumatic regeneration of the nervous tissue (see Burda et al., 2015, and references therein). In some conditions, however, traumatic injury may impair upon astroglial protective functions; lesions to the brain are reported to reduce expression of astrocytic glutamate transporters, hence aggravating glutamate excitotoxicity (Beschorner et al., 2007; Rao et al., 1998).

3. Infectious diseases of the CNS

Infections/infestation of the nervous tissue caused by bacteria, viruses, fungi and parasites are classified into meningitis, encephalitis or brain abscess. The reaction of neuroglia is fundamental to infectious pathology with activated microglia and reactive astrocytes being often indispensable for limiting the extent of damage. Astroglial responses to pathology depend on the nature of an infectious agent. Infection with the gram-positive *Pneumococcus* or *Staphylococcus* rapidly induces an astroglial program manifested by hypertrophy and up-regulation of GFAP expression (Iovino et al., 2013), and secretion of pro-inflammatory factors including tumor necrosis factor α ($\text{TNF-}\alpha$), interleukins (ILs) and macrophage inflammatory protein 1 α (Liu et al., 2010). Activation of microglia in the context of the gram-positive bacterial infection involves NOD2 (nucleotide-binding oligomerization domain containing protein 2) signaling (Liu et al., 2010) and activation of neurokinin-1 receptors stimulated by substance P receptors (Chauhan et al., 2011). Astroglial reactivity is also linked to activation of toll-like TLR2 type receptors (Esen et al., 2004). Bacterial infection is also reported to down-regulate

expression of connexins that form intercellular gap junctions and hence astroglial syncytia, which is regarded as a neuroprotective mechanism, limiting the spread of inflammation (Esen et al., 2007). Astroglial response in the context of bacterial infection has clear defensive capacity: the neurological damage was exacerbated when *S. aureus* were injected in the brains of mice with the genetic deletion of GFAP (Stenzel et al., 2004).

The gram-negative bacteria similarly cause early astrogliosis, augmented with astroglial proliferation; expression of GFAP decreased following an antibiotic treatment (Chauhan et al., 2008; Dotevall et al., 1996). Direct incubation of astrocytes with the gram-negative *Borrelia burgdorferi* up-regulated synthesis and release of matrix metalloprotease 9, that could contribute to the disruption of the blood–brain barrier (Perides et al., 1999). In addition, an exposure to *B. burgdorferi* caused an increase in the production of IL-6, TNF- α , IL-8, chemokine (C-X-C motif) ligand 1 (CXCL-1), and CXCL-10 in human cultured astrocytes (Brisette et al., 2013).

Astroglial responses to viral infections of the CNS are more complex. First, astrocytes can be directly infected. For example, up to 19% of astroglial cells in post-mortem specimens obtained from HIV-1 patients contain viral genetic material and hence act as an infectious reservoir (Gray et al., 2014; Joseph et al., 2015; Narasipura et al., 2014). Astrocytes have been found to accumulate HIV-1 within Cluster of Differentiation 81(CD81)-lined vesicles; as long as the virus remained in these vesicles it had been protected from degradation. Furthermore, the same vesicles were instrumental for the secondary *trans*-infection of T-cells (Gray et al., 2014). In the HIV dementia both astrogliosis as well as astroglial degeneration and death have been documented; the loss of astroglial function can contribute to cognitive decline through an overall decrease in homeostatic support (Churchill et al., 2009). Similarly to gram-positive bacteria, HIV-1 infection down-regulated expression of connexins, thus limiting astroglial coupling (Orellana et al., 2014). Herpes simplex virus 1 (HSV1) also infects astrocytes and triggers their activation, which manifests in the form of inflammatory response with an increase of TNF- α and IL-6 production. Astroglial activation in the context of HSV infection was mediated through TLR3, and contributed to neuroprotection; the deficiency in TLR3 exacerbated HSV pathology in mice (Reinert et al., 2012) and in humans (Herman et al., 2012). Astroglial functional asthenia was also shown to contribute to the human cytomegalovirus (CMV) brain damage; in this context, astrocytic deficiencies included a decrease in release of thrombospondins, otherwise required for normal synaptogenesis, and compromised glutamate uptake that participated in increased excitotoxicity (Zhang et al., 2013, 2014). In addition, CMV infected astrocytes secreted a viral IL-10 homologue, which affected the microglial production of CXCL10, which in turn decreased an overall immune response to the infection (Cheeran et al., 2003).

Finally, astroglia are the primary cellular target for *Toxoplasma gondii*. Infected astrocytes undergo biochemical remodeling which leads to an increased production and secretion of kynurenic acid that acts on neuronal glutamate and acetylcholine receptors, being implicated in pathogenesis of some forms of schizophrenia, which will be discussed in details below.

4. Toxic damage to the brain

4.1. Heavy metal toxic encephalopathies

Astroglia are the main target of encephalopathies following exposures to the toxic concentrations of heavy metals, such as manganese, lead, aluminum or methylmercury. Accumulation of heavy metals in astrocytes (mediated through various types of

plasmalemmal transporters) results in the down-regulation of EAAT1/2 glutamate transporters and hence in compromised glutamate uptake (Struys-Ponsar et al., 2000; Suarez-Fernandez et al., 1999; Verkhratsky et al., 2013; Yin et al., 2007). This in turn leads to excitotoxicity and neuronal death as well as to the imbalance of neurotransmission, which all could contribute to psychotic and cognitive symptoms of heavy metal poisoning.

4.2. Hyperammonemia and hepatic encephalopathy

Increased concentration of blood ammonium occurs in several diseases, of which the most prominent is the hepatic failure; elevation of ammonium in the brain causes numerous mental and behavioral symptoms including confusion, forgetfulness, irritability, alterations of consciousness, such as lethargy and somnolence. In terminal stages, hyperammonemia is associated with brain edema that causes death (Brusilow et al., 2010; Butterworth, 2011; Felipo, 2013). For a long time the primary target of hyperammonemia was associated with astroglia-specific glutamine synthetase that “metabolizes” ammonium owing to its fixation to glutamate, hence forming glutamine (Albrecht et al., 2010; Norenberg, 1987; Rose et al., 2013). Occlusion of the normal metabolism of glutamate (i.e., its conversion into glutamine catalyzed by glutamine synthetase) in the context of ammonium overload (as glutamine synthetase gets inhibited by ammonium) was believed to result in neurotransmission disbalance causatively linked to mental and cognitive symptomatology (Brusilow et al., 2010; Butterworth, 2011). Pathological potential of astroglia, however, turns out to be more complex. Recent observations demonstrated that in conditions of increased ammonium astrocytes rapidly undergo functional remodeling which severely compromises their homeostatic capabilities. This is represented by: (i) failure in K^+ buffering due to (at least in part) decreased expression of astroglial $K_{i,4.1}$ mediated through N-methyl D-aspartate (NMDA) type of glutamate receptors (Obara-Michlewska et al., 2014; Rangroo Thrane et al., 2013); (ii) aberrant astroglial Ca^{2+} signaling and Ca^{2+} homeostasis due to an increase in expression of voltage-gated Ca^{2+} channels and Ca^{2+} -permeable transient receptor potential (TRP) channels as well as in abnormal Ca^{2+} release from intracellular stores (Haack et al., 2014; Liang et al., 2014; Wang et al., 2015); (iii) aberrant Ca^{2+} signals trigger exocytotic astroglial glutamate release which may add to excitotoxic damage of the brain (Gorg et al., 2010; Montana et al., 2014); and (iv) massive pathological elevations in cytosolic Na^+ concentration and compromised H^+ transport which leads to abnormalities in pH regulation (Kelly et al., 2009; Kelly and Rose, 2010). This astroglial remodeling may fundamentally contribute to the hyperammonemia damage.

5. Astroglial pathology in stroke

Astroglial contribution to pathophysiology of stroke is multifaceted (Gleichman and Carmichael, 2014; Zhao and Rempe, 2010). The main modes of astrocytic reaction to focal ischemia are represented by homeostatic/neuroprotective response and reactive astrogliosis. In conditions of stroke, local interruption of the blood flow triggers pan-necrosis at the infarction core, the site and volume of which gets determined by anatomical location and duration of the ischemic attack. Often, the conditions of focal ischemia are transient, as the blood flow can be restored when the vessel blockage is removed. In this case, restored blood flow results in reperfusion of the damaged area, which itself is potentially damaging because of the production of ROS and secondary ion imbalances. Primarily pathogenesis of ischemia is associated with the limitation of oxygen supply (hypoxia or anoxia), as well as with restrictions in supply of metabolic substrates. In the infarction core

all cells rapidly die; the core is surrounded by the ischemic penumbra, which contains viable cells, although with compromised metabolism and function. The infarction core is formed very rapidly, within minutes to hours after initiation of the stroke. This is followed by a much slower process of expansion of the infarction zone through the penumbra, which develops over many hours and days.

After the onset of stroke and formation of ischemic core, penumbra astrocytes become critical elements that define the infarction size and lasting neurological deficit. The penumbra is regularly invaded with the waves of spreading depolarization that are initiated at the necrotic border and are instrumental for spreading the infarction volume (Lauritzen et al., 2011; Nedergaard, 1996). Astrocytes are the main neuroprotective elements in the penumbra that limit neuronal death through controlling ions and glutamate, and supporting neurons with energy substrates; stressing astrocytes by, for example, debilitating their mitochondria exacerbates neuronal death (Sayre et al., 2014). Astrocytes are central for containing glutamate excitotoxicity, which is the major cause of neuronal death in the ischemic penumbra; importantly, astroglial plasmalemmal glutamate transporters are controlled by transmembrane Na^+ gradient, and loss of Na^+ homeostasis inhibits glutamate clearance (Kirischuk et al., 2012). Levels of expression of EAAT2/GLT-1 astroglial transporter are critical for neuroprotection; down-regulation of GLT-1 expression with siRNA increases the infarct size (Rao et al., 2001), whereas over-expression of GLT-1 reduces the infarction volume and limits neurological deficit (Harvey et al., 2011). Pharmacological boost of GLT-1 expression/function with tamoxifen or riluzole similarly reduced infarction in animal models (Weng and Kriz, 2007; Zhang et al., 2005). Another important component of astroglia-provided neuroprotection in the post-stroke tissue is associated with antioxidant defense; astrocytes maintain glutathione and ascorbic acid systems and thus buffer ROS (Dringen et al., 2000; Dringen and Hirrlinger, 2003; Makar et al., 1994).

Stroke and ischemia rapidly trigger astroglial activation, the degree of which depends on the distance to the ischemic core (Burda and Sofroniew, 2014). The main outcome of astroglial activation in the immediate vicinity of the necrotic area is the formation of an astroglial scar, whereas more peripheral reactive astrocytes are important for post-lesion regeneration (Gleichman and Carmichael, 2014). At the same time reactive astrocytes may acquire a neurotoxic phenotype and be detrimental to neuronal survival (Gleichman and Carmichael, 2014).

6. Epilepsy

There is increasing evidence that astrocytes undergo profound pathological remodeling in the context of epilepsy; emerging pathological phenotype is characterized by changes in ion channels, receptors, transporters which all in all lead to a generalized failure of astroglial-dependent homeostasis in affected brain areas (Bedner et al., 2015; Steinhäuser et al., 2015). In human astrocytes studied in tissue obtained from patients with mesial temporal lobe epilepsy and associated sclerosis, astrocytes displayed abnormal electrophysiological properties and were completely devoid of intercellular gap junctional coupling. Similar properties were found in astroglial cells in hippocampi of the intracortical kainate injection mouse epilepsy model (Bedner et al., 2015). Sclerotic tissue also demonstrated an increased expression of GFAP suggesting some form of reactivity. Pathophysiological contribution of astrocytes seems to be linked to impaired K^+ buffering, as an increased concentration of K^+ in the extracellular space is associated with epilepsy (Lothman and Somjen, 1976; Moody et al., 1974), and the experimental increase in K^+ content in the neural tissue triggers epileptiform activity (Traynelis and

Dingledine, 1988). On the molecular level, the K^+ buffering pathway, which seems to suffer the most in epilepsy, is associated with an expression level of inward rectifier $\text{K}_{\text{ir}}4.1$ channels. Both, the density of $\text{K}_{\text{ir}}4.1$ -mediated currents and presence of $\text{K}_{\text{ir}}4.1$ protein were substantially reduced in astrocytes in the human sclerotic CA1 hippocampal area (Bordey and Sontheimer, 1998; Heuser et al., 2010; Hinterkeuser et al., 2000); see also (Steinhäuser et al., 2015) for details and extended reference list. Pan-deletion of $\text{K}_{\text{ir}}4.1$ encoding gene *KCNJ10* triggered motor impairments and death at postnatal day 8. However, animals with astroglia-specific *KCNJ10* knockout demonstrated ataxia, seizures and died around postnatal day 30; astrocytes in these animals were depolarized, and K^+ buffering as well as glutamate uptake were profoundly hampered (Djukic et al., 2007). Several other studies have confirmed these findings and clearly demonstrated that the deletion of astroglial $\text{K}_{\text{ir}}4.1$ channels induces epilepsy in laboratory animals (Steinhäuser et al., 2015). In humans, mutations of *KCNJ10* gene are associated with epilepsy – ataxia – sensorineural deafness – salt-wasting renal tubulopathy (EAST)/seizures – sensorineural deafness – ataxia – mental retardation – electrolyte imbalance (SeSAME) syndrome, an autosomal recessive disorder (Bockenbauer et al., 2009; Scholl et al., 2009). In addition to the loss of $\text{K}_{\text{ir}}4.1$ function, astrocytes in the epileptic brain lose their connexin-mediated coupling, which hinders spatial K^+ buffering (Steinhäuser et al., 2015).

Another pathologically relevant result of astroglial remodeling in epilepsy is associated with the impairment of glutamate uptake (Coulter and Eid, 2012). Genetic deletion of astroglial-specific EAAT2 (known in rodents as GLT-1) glutamate transporter results in an epileptiform phenotype with lethal spontaneous seizures, increased susceptibility to acute cortical injury and seizures after administration of sub-convulsive doses of pentylentetrazole (Tanaka et al., 1997). Pharmacological blockade of EAATs by intracerebroventricular injections of DL-threo-beta-benzyloxyaspartate triggered seizures, further corroborating the role of glutamate uptake (Demarque et al., 2004). Decreased expression of glutamine synthetase (GS; critical for supplying neurons with glutamine and hence for the maintenance of normal glutamatergic and GABA transmissions) was also linked to epilepsy pathogenesis, i.e., a decrease in GABA-ergic transmission following reactive astroglial-induced down-regulation of glutamine synthetase caused neuronal hyperexcitability similar to that seen in animal models of temporal lobe epilepsy (Ortinski et al., 2010).

Long-lasting pharmacological inhibition of GS reduced glutamate levels in astrocytes and decreased the synthesis of neuronal GABA, and developed seizures (Benedetti et al., 2011; Wang et al., 2009). The evidence that GS levels are significantly decreased in the human hippocampus and amygdala in temporal lobe epilepsy further corroborated a critical role of this enzyme in epileptogenesis (Eid et al., 2013). Such assumption was also supported by the observation that reduced GS expression induced by gene mutations resulted in severe seizures (Haberle et al., 2011).

In epilepsy astrocytes can also influence neuronal excitability through aberrant adenosine homeostasis, because of changes in the expression of the astroglia-specific adenosine kinase (ADK), which is the central enzyme for adenosine turnover in the CNS (Aronica et al., 2013; Boison and Aronica, 2015). Increased expression of ADK was detected in tissue specimens of subjects with pharmacologically refractory temporal lobe epilepsy (Aronica et al., 2013, 2011; Masino et al., 2011). Increased ADK expression reduces the availability of adenosine, which, in turn, leads to an increased neuronal network excitability, thus being potentially responsible for the enhanced susceptibility to seizures (Li et al., 2008, 2012, 2007).

7. Neurodevelopmental disorders

7.1. Autism spectrum disorders (ASD)

Autism, or as more recently defined as autistic spectrum disorders (ASD), is a hypernym that covers widely heterogeneous conditions that are broadly manifested by aberrant social interaction, restrictive patterns of behaviors and sometimes cognitive deficiency (Quaak et al., 2013). These are generally believed to represent neurodevelopmental abnormalities, although the pathological mechanisms are many, and they also can be widely different. The failure in synaptic wiring of the brain as well as aberrant neurotransmission are likely to be responsible for many types of autistic developments (Cellot and Cherubini, 2014; Giovedi et al., 2014; Rojas, 2014); in addition, autistic pathology is often connected to oxidative stress (McGinnis, 2004; Smaga et al., 2015). Astroglial function is critical for synaptogenesis, synaptic maturation and maintenance (Verkhratsky and Nedergaard, 2014). Likewise, astroglial cells are the main source of ROS scavengers and anti-oxidants, such as glutathione and ascorbic acid, respectively (Bridges et al., 2012; Wilson et al., 2000). Similarly, as described above, astrocytes are the main target for various toxic factors, such as heavy metals, which are also implicated in ASD etiology (Zeidan-Chulia et al., 2014). Pathological changes in astroglia in the ASD context are far from being described in detail; there are indications of increased glial reactivity (Zeidan-Chulia et al., 2014), and in post-mortem human brains up-regulation of connexin 43 expression and down-regulation of aquaporin 4 expression (both molecules being specifically associated with astrocytes) were reported (Fatemi et al., 2008).

7.2. Down syndrome

Down syndrome (DS), associated with the trisomy of chromosome 21, is characterized by mental retardation, and has certain neuropathological semblance of Alzheimer's disease; in DS both neuritic plaques and interneuronal tangles are present (Wisniewski et al., 1985). ASD is frequently diagnosed in children with DS. Astrocytes are reported to be significantly depleted in the cortex of DS sufferers (Karlsen and Pakkenberg, 2011). There are also indications of functional deficits in DS astrocytes that are unable to properly support synaptogenesis and neuronal maturation (Chen et al., 2014).

7.3. Fragile X syndrome

Fragile X syndrome is a neurodevelopmental disorder associated with the expression of Fragile X mental retardation protein. It is also known as Martin–Bell syndrome or Escalante's syndrome, and is one of the frequent causes of ASD and mental disability (Kidd et al., 2014). The Fragile X mental retardation protein expression in astrocytes decreases their capability of supporting and protecting neurons in the *in vitro* conditions, which may contribute to delayed neuronal maturation and development (Jacobs and Doering, 2010; Jacobs et al., 2010).

7.4. Costello syndrome

Primary role for astroglia in Costello syndrome, that belongs to a family of neurodevelopmental disorders caused by aberrant Ras (a name abbreviated from rat sarcoma) signaling and hence termed RASopathies (Tidyman and Rauen, 2009), has been revealed very recently (Krencik et al., 2015). It appears that astrocytes expressing mutated *HRAS* (Harvey rat sarcoma viral oncogene homolog) gene, resulting in hyperactivation of Ras signaling, which accelerates

differentiation and maturation of astrocytes, and leads to astroglial hypertrophy. This in turn is claimed to promote early neuronal maturation and aberrant experience-dependent formation of neuronal ensembles, which in turn may be responsible for cognitive and behavioral abnormalities.

8. Astroglia in major neuropsychiatric diseases

8.1. Mood disorders

There is an increasing understanding that astroglial pathology, especially in the fronto-limbic areas of the brain may substantially contribute to pathophysiology of mood disorders (Popoli et al., 2012; Rajkowska and Stockmeier, 2013; Sanacora and Banasr, 2013; Verkhratsky et al., 2014d). First and foremost, the morphometric analysis revealed much more pronounced changes in the number of glial cells (astrocytes and oligodendrocytes) than in the number of neurons in the context of mood disorders, including major depressive and bipolar disorders. Decrease in astroglial numbers and packing density was observed throughout the fronto-limbic areas of the brain, including the orbito-frontal area, and anterior cingulate, prefrontal, entorhinal and subgenual cortices, as well as the amygdala (Bowley et al., 2002; Cotter et al., 2002, 2001; Ongur et al., 1998; Rajkowska et al., 1999). Decreased number of astroglial GFAP-positive profiles and overall GFAP immunoreactivity were detected in the animal models of chronic stress (Braun et al., 2009; Czeh et al., 2006). In parallel, several other astroglial markers, such as aquaporin 4, astroglial connexins, astroglial plasmalemmal glutamate transporters and glutamine synthetase were all reduced in the context of attention deficit disorder and chronic stress (Barley et al., 2009; Bernard et al., 2011; Rajkowska and Stockmeier, 2013; Sequeira et al., 2009).

Direct ablation of astrocytes in the medial-prefrontal cortex of mice with the specific toxin ι -alpha-amino adipic acid (ι -AAA) resulted in a depressive behavior similar to that induced by chronic stress (Banasr and Duman, 2008). Chronic stress also reduced astroglial expression of connexin 43 as well as dye coupling between astroglial cells in the prefrontal cortex. Moreover, pharmacological inhibition of gap junctional conductance in the prefrontal cortex induced anhedonia that is one of the main symptoms of depression (Sun et al., 2012). Likewise, inhibition of astroglial plasmalemmal glutamate transporters also induced anhedonia (Bechtholt-Gompf et al., 2010). Chronic treatment with antidepressants directly affected astroglia, by increasing expression of receptors and transporters responsible for CNS homeostasis and limiting glutamate release (Czeh and Di Benedetto, 2013; Dong et al., 2015; Liu et al., 2015; Ren et al., 2015). In conclusion, mood disorders are associated with astrodegeneration and astroglial asthenia, which in turn affect brain homeostatic reserve and arguably synaptic transmission.

8.2. Schizophrenia

Pathologically changed astrocytes are the common feature of morphology of the schizophrenia-affected human brain. Decrease in astroglial numbers/densities, as well as pathological (dystrophic or swollen) astroglial profiles have been observed in various brain regions, including cortical and hippocampal structures (Falkai and Bogerts, 1986; Rajkowska et al., 2002; Schmitt et al., 2009; Webster et al., 2001). Astroglial reactivity in schizophrenia remains a debatable matter, as it might be tainted by age, medication and other associated factors (Schneider and Dwork, 2011). In addition, a significant decrease in expression of astroglia-specific molecules fundamental for CNS homeostasis, including deiodinase type II, aquaporin-4, S100 β , glutamine synthetase, plasmalemmal glutamate transporters, and thrombospondin, was found in the deep

layers of the anterior cingulate gyrus, suggesting that a subset of astrocytes localized to specific cortical layers can be affected in schizophrenia (Xia et al., 2014). Decreased expression of EAAT1/2 plasmalemmal glutamate transporters is documented for the prefrontal cortex (Bauer et al., 2008, 2010) and hippocampus (Ohnuma et al., 2000; Shan et al., 2013). Of note, genetic deletion of EAAT1 resulted in endophenotypes reflective of schizophrenia, including locomotor hyperactivity and abnormal social behavior (Karlsson et al., 2008, 2009). In addition, expression of hexokinase 1 (which contributes to regulation of glutamate-glutamine shuttle) was decreased in the post mortem tissue from schizophrenia sufferers (Shan et al., 2014a). Incidentally, astroglial expression of plasmalemmal cystine-glutamate exchanger Sxc⁻, which by continuous release of glutamate controls extrasynaptic concentration of the latter (Bridges et al., 2012), was increased in the rodent phencyclidine model of schizophrenia (Baker et al., 2008). Metabolism of the endogenous positive modulator of NMDA receptors, D-serine, which at least in part, is associated with astrocytes, is also affected in schizophrenia; levels of D-serine appear to be lower in the diseased brain (Bendikov et al., 2007). Expression of mutant *Disrupted-In-Schizophrenia-1* (*DISC1*) gene in astrocytes affects cell-specific D-serine racemase (Ma et al., 2013), which leads to D-serine depletion in the brain, which in turn is linked to higher risk of schizophrenia (Labrie et al., 2009). Astrocytes also produce kynurenic acid, a metabolite of tryptophan produced mainly by astrocytes, which can act as an endogenous inhibitor of NMDA (as an antagonist to the glycine site) and acetylcholine receptors. Higher levels of kynurenic acid were detected in the post-mortem brains of psychotics (Holtze et al., 2012). The astroglial production of kynurenic acid increases after the brain infection with *Toxoplasma gondii*; this increases the risk of schizophrenia (Schwarcz and Hunter, 2007). Abnormal astroglial capability to control glutamate homeostasis may result in profound synaptic remodeling and increase in glutamate spillover, which in turn may substantially affect spatial specificity of synaptic transmission and contribute to overall confused information processing characteristics of schizophrenia (Shan et al., 2014b).

All in all, these data indicate a functional impairment of astroglial control over glutamatergic transmission. Considering that aberrant glutamatergic transmission is currently regarded as one of the leading mechanisms in pathophysiology of schizophrenia (Laruelle, 2014; Meador-Woodruff et al., 2003), astrocytes may certainly hold the key in this devastating disorder.

8.3. Addictive disorders

Astroglial reactivity as well as the decrease in the astroglial number and atrophy were reported in post-mortem human material from different forms of addictions (Armstrong et al., 2004; Büttner and Weis, 2006; Fattore et al., 2002; Miguel-Hidalgo, 2009; Oehmichen et al., 1996; Suarez et al., 2000; Weber et al., 2013). Treatment of animals with several drugs of abuse, including cocaine (Bowers and Kalivas, 2003; Fattore et al., 2002), methamphetamine (Friend and Keefe, 2013; Guilarte et al., 2003) and morphine (Song and Zhao, 2001), resulted in up-regulation of GFAP expression and reactive astrogliosis. At the same time, a prolonged exposure to ethyl alcohol led to a decrease in GFAP expression and morphological atrophy of astrocytes (Franke, 1995; Rintala et al., 2001). In post-mortem human tissue obtained from alcoholics, hypertrophic astrocytes were observed along with areas depleted from GFAP positive astroglial profiles (Cullen and Halliday, 1994; Miguel-Hidalgo, 2005).

The above controversial findings may be associated with distinct stages of addiction: in the brains of patients with short-lasting alcoholic dependence the density of astrocytes diminished and astrocytic profiles were atrophic, whereas in subjects with a

longer history of addiction the number of astrocytes increased and GFAP expression was up-regulated (Miguel-Hidalgo et al., 2006, 2002; Skuja et al., 2012). In alcoholism, the number of astrocytes was decreased in the prefrontal cortex (Miguel-Hidalgo et al., 2006). Likewise, GFAP expression and astrocytic numbers were remarkably decreased in the prelimbic cortex of ethanol-preferring rats (Miguel-Hidalgo, 2005), whereas binge-like ethanol administration in adolescence reduced astrocytic density (without affecting neuronal density) in the adult rat medial prefrontal cortex of males but not females (Koss et al., 2012). Injecting glial toxin L-AAA to ablate astroglia as well as injection of 8- α -glycyrrheticin, a connexon/gap junction inhibitor, acid into the prelimbic area of the prefrontal cortex of rats significantly increased alcohol preference (Miguel-Hidalgo et al., 2009).

Aberrant glutamate clearance and metabolism are likely to be the leading functional change in astrocytes in the context of addiction: expression of both EAAT2 and Sxc⁻ glutamate transporters were decreased, although overall extracellular glutamate concentration increases probably because of imbalance between glutamate uptake (EAAT2) and release (Sxc⁻) (Moussawi et al., 2011; Reissner and Kalivas, 2010; Reissner and Kalivas, 2014). Down-regulation of astrocytic EAAT2 transporter has been observed in several animal models of addiction to, for example, cocaine (Knackstedt et al., 2010), nicotine (Gipson et al., 2013) or alcohol; incidentally, treating alcohol-preferring rats with the β -lactam antibiotic ceftriaxone (that increases EAAT expression) decreased alcohol seeking and increased expression of astroglial glutamate transporters (Qrunfleh et al., 2013; Sari et al., 2013). Another component of glutamatergic transmission impaired by addiction is D-serine, levels of which are reported to be decreased by cocaine (Curcio et al., 2013), while intraperitoneal injections of D-serine reduced cocaine seeking/addictive behavior (Kelamangalath and Wagner, 2010; Yang et al., 2013).

Recent astrocyte-specific expression of designer receptor exclusively activated by a designer drug (DREADD) responding to clozapine N-oxide (CNO) pointed out to astroglial contribution to the extracellular level of glutamate in the nucleus accumbens core (NAcore) (Scofield et al., 2015). Namely, long-term cocaine-induced reductions in extracellular glutamate in the NAcore affect synaptic plasticity, otherwise mediated via neuronal autoreceptors, i.e., group II metabotropic glutamate receptor (mGluR) responsible for relapse vulnerability (consult references within Scofield et al., 2015). In the DREADD-expressing astrocytes, CNO increased NAcore extracellular glutamate levels in vivo, which was mediated by soluble N-ethylmaleimide-sensitive fusion protein attachment protein receptor (SNARE)/exocytotic pathway. At behavioral level, cue-induced reinstatement of cocaine seeking, but not sucrose self-administration, in rats extinguished from cocaine was inhibited by CNO, an action mediated via the group II mGluRs.

9. Neurodegenerative diseases

9.1. Alzheimer's disease

Alzheimer's disease (AD), named so by Emil Kraepelin (Kraepelin, 1910) to praise the description of the disease made by Alois Alzheimer in 1907 (Alzheimer, 1907), is a chronic progressive neurodegenerative disease that starts long before clinical manifestations. Etiology of idiopathic or sporadic AD remains unknown, reflecting most likely a combination of genetic, lifestyle and environmental factors. The rare (with less than 1–5% incidence) form of familial, or early onset AD, FAD (<http://www.nia.nih.gov/alzheimers>) is associated with the expression of mutated genes for amyloid precursor protein (APP), presenilins (PS1 and PS2) and tau (Bertram et al., 2010). The clinical progression of AD is characterized

by a progressive cognitive and functional deficiency that ultimately leads to death. The mean life expectancy following diagnosis is approximately six years, although the disease advancement shows individual variability (Molsa et al., 1986).

Histopathologically, the disease is characterized by the emergence of extracellular β -amyloid containing senile plaques and the formation of intraneuronal neurofibrillary tangles from misphosphorylated tau protein (Selkoe, 2001). Senile plaques may affect synaptic contacts and disturb the proper blood supply by interfering with astrocytic endfeet (otherwise plastering blood vessels), hence contributing to cell death and brain atrophy.

Transformations of astrocytes begin at the early phases of the AD and are mainly characterized by atrophy (Beauquis et al., 2013, 2014; Kulijewicz-Nawrot et al., 2012; Olabarria et al., 2010; Verkhratsky et al., 2010; Yeh et al., 2011). In triple transgenic AD mice, expressing human mutated APP (Swedish mutation; K670N/M671L), PS1 (M146V) and tau protein (P301L) (Oddo et al., 2003), astrocytes from several brain regions were characterized, analyzed and quantified by surface area and volume occupied by GFAP-positive profiles. All of the parameters analyzed were decreased suggesting atrophic changes of astroglia, while the number of astrocytes remained unaltered (Kulijewicz-Nawrot et al., 2012; Olabarria et al., 2010; Yeh et al., 2011). These changes were observed as early as 1 month of age in the entorhinal cortex, at ~6 months in the prefrontal cortex and at ~9–12 months in the hippocampus, all before β -amyloid aggregation and senile plaques formation started (Kulijewicz-Nawrot et al., 2012; Olabarria et al., 2010; Yeh et al., 2011). Similar astroglial atrophy was observed in another AD model, the transgenic mutant APP (PDAPP-J20) mice carrying the Swedish and Indiana (V717F) APP human mutations (Beauquis et al., 2013, 2014). Additionally, the decrease in GFAP content was accompanied with reduced immunoreactivity for glutamine synthetase in the prefrontal cortex but not in the entorhinal cortex (Olabarria et al., 2011; Yeh et al., 2013) suggesting functional deficiency. Atrophic astrocytes lose the ability to perform their essential homeostatic functions, hence instigating a profound and irreversible chain of pathological changes in the brain, resulting, over time, in weakening of synaptic contacts and in early cognitive impairment. Astrocytes have a crucial role in synaptogenesis and maintenance of synapses (Eroglu and Barres, 2010; Verkhratsky and Nedergaard, 2014). Therefore, deficient homeostatic support of neuronal networks may result in a decrease of synaptic activity and synaptic loss, which represent an early event in AD progression (Terry, 2000; Verkhratsky et al., 2014a, 2010). Furthermore, functional astroglial atrophy may affect their ability to clear β -amyloid; this was connected with aberrant interactions between dynein-dynactin complexes which resulted in abnormal endocytosis, which was identified in the brains of aged monkeys and may represent the mechanism for deficient clearance of β -amyloid (Kimura et al., 2014).

The early stage of the AD is also characterized with metabolic changes, e.g., progressive reduction in glucose metabolism, detected in functional brain imaging in AD patients, which may restrain energy metabolism in both astrocytes and neurons (Mosconi et al., 2008). Since glycolytic pathways are more active in astrocytes (as compared to neurons), these glial cells are more likely to be affected with the above glucose metabolism impairment. Experimental work on primary cultured astrocytes in vitro showed both, albeit in separate studies, a decrease (Parpura-Gill et al., 1997; Soucek et al., 2003) and an increase (Allaman et al., 2010) in glucose consumption after treatment with β -amyloid. Post-mortem analysis of AD brain tissue also yielded conflicting results; both an increase (Bigl et al., 1999; Soucek et al., 2003) and a decrease (Blass et al., 2000; Liang et al., 2008) in activity of glycolytic enzymes were described. Metabolic supply is

tightly connected with the blood flow, which is significantly reduced in patients with AD, especially in the early phase of the disease (Bell and Zlokovic, 2009; Zlokovic, 2008). Astrocytes together with neurons secrete a number of signaling molecules to control microcirculation (Attwell et al., 2010; Iadecola and Nedergaard, 2007; Zonta et al., 2003). Therefore, changes in astroglial morphology, both atrophic in an early stage, and hypertrophic in a late stage of the disease, can have a significant impact on remodeling of vascularization in the diseased brains (Farkas and Luiten, 2001).

Reactive astrocytes as a marker of profound changes in the AD brain morphology were observed already by Alois Alzheimer (Alzheimer, 1910), who found hypertrophic glial cells surrounding degenerating neurons and senile plaques. More recent studies of AD brains from deceased patients found up-regulation of the main astroglial markers, GFAP and S100 β proteins (Beach and McGeer, 1988; Griffin et al., 1989; Meda et al., 2001; Mrak and Griffin, 2005; Rodriguez et al., 2009; Verkhratsky et al., 2010). While astrogliosis is mostly associated with senile plaques, some reactive astrocytes were found in gray matter areas with no apparent plaque load (Simpson et al., 2010). Furthermore, even though some studies reported on a certain degree of correlation between increased GFAP expression with the Braak stage of AD, there was no evidence of correlation between reactive astrogliosis and the amount of β -amyloid deposits (Simpson et al., 2010). Astrogliosis around senile plaques and β -amyloid deposits were also detected in AD transgenic mice, suggesting that the animal models recapitulate this aspect of pathological progression (Olabarria et al., 2010; Rodriguez-Arellano et al., 2015; Verkhratsky et al., 2010). In the gray matter of the transgenic mice over-expressing the London (V717I) APP mutant, reactive astrocytes emerged prior to the formation of plaques. These reactive astrocytes were grouped together, were secreting pro-inflammatory factors and demonstrated increased expression of inducible nitric oxide synthetase (iNOS); it has been suggested that these groups of reactive astroglia marked locations for future formation of senile plaques (Heneka et al., 2005). It is important to emphasize that in the above context astrogliosis is protective and its inhibition exacerbates β -amyloid load (Kraft et al., 2013). Furthermore, astrogliosis in animal models is region-specific; its absence in entorhinal and prefrontal cortices may underlie vulnerability of these areas in AD affected brains (Kulijewicz-Nawrot et al., 2012; Yeh et al., 2011).

Experiments in vitro documented reactive changes in cultured astrocytes after exposure to soluble β -amyloid (DeWitt et al., 1998); this reactivity was also associated with abnormal Ca^{2+} oscillations (Abramov et al., 2003, 2004). Exposure of cultured astrocytes to pathologically relevant concentrations of β -amyloid affected expression of proteins related to Ca^{2+} signaling and homeostasis in brain region-dependent manner (Grolla et al., 2013; Lim et al., 2014), and down-regulated expression of glutamate transporters (Matos et al., 2008). Reactive astrocytes associated with senile plaques in APP/PS1 AD animal model were shown to generate spontaneous Ca^{2+} oscillations and abnormal Ca^{2+} waves (Kuchibhotla et al., 2009). These limited reports in functional changes of astrocytes in AD imply that they are β -amyloid initiated. However, very little is known about precise molecular mechanisms of these events.

Existing therapies for AD are limited and ineffective. There are only four drugs approved by The Food and Drug Administration (FDA) for use in the USA. They mainly deal with delaying and slowing symptoms for a limited time rather than resolving underlying causes. Therefore, there is an urge to pursue new approaches for more effective therapies. Only recently, astrocytes emerged as a potential drug targets; as described above, astrocytic changes throughout all phases of the disease are evident. Astroglial atrophy can be reversed with environmental stimulation including

exposure to increased physical activity or enriched environment; these astroglial changes coincide with a decrease in β -amyloid load (Beauquis et al., 2013; Rodriguez et al., 2013). Viral transfection of astrocytes in APP/PS1 AD model with a peptide that interferes with the immune/inflammatory calcineurin/nuclear factor of activated T-cells (NFAT) signaling cascades, improved cognitive shortfalls and decreased β -amyloid load (Furman et al., 2012). As AD is a complex disease which seeks multiple approaches to treatments and perhaps multiple treatments of its symptoms, the emerging potential of astroglia-specific therapy may yield novel healing tactics designed to prevent and delay the disease progression.

9.2. Amyotrophic lateral sclerosis

Amyotrophic lateral sclerosis (ALS), or Lou Gehrig disease, is a chronic, progressive and incurable neurodegenerative disease of mostly unknown etiology characterized by the impairment of the motor function due to progressive neuromuscular weakening, inflexible muscles, and spasticity. The disease develops usually at age of 40–60 with symptoms appearing and progressing fast; in most cases patients pass away within 3–5 years after diagnosis due to respiratory failure. Currently, only one FDA approved drug, i.e., riluzole, is employed for ALS therapy, and it is of very limited effectiveness, mainly treating symptoms of the disease (Hardiman, 2011). ALS appears in two different forms: sporadic ALS and familial ALS (fALS). Sporadic ALS is more common representing approximately 90–95% cases, appearing as a consequence of accumulated exposure to risk factors, which include aging and environmental agents. The remaining up to ~5% of cases are classified as fALS and they appear as an autosomal dominant trait linked to mutations in various genes, including human *Superoxide dismutase 1* (hSOD1) (Rosen et al., 1993), *TAR DNA binding protein* (TARDBP) (Kabashi et al., 2008; Sreedharan et al., 2008), *Fused in sarcoma* (FUS) (Kwiatkowski et al., 2009; Vance et al., 2009), *Alsin* (Yang et al., 2001), *Optineurin* (Maruyama et al., 2010), *C9orf72* (DeJesus-Hernandez et al., 2011; Deng et al., 2011; Renton et al., 2011), *Ubiquilin 2* (Deng et al., 2011), and *Profilin 1* (Wu et al., 2012).

Astroglia contribute to several pathways responsible for ALS-associated neuronal damage. Conceptually, astrocytes can contribute to neuronal death either directly (by releasing neurotoxic substances) or indirectly (through the loss of homeostatic/protective functions). Selective expression of hSOD1-mutant gene in astrocytes employed the *Cre/loxP* recombination system and reduced expression of the hSOD1-mutant caused delay in ALS development (Yamanaka et al., 2008), while animals lacking hSOD1-mutant in astrocytes exhibited a later onset of the disease and a longer lifespan (Wang et al., 2011). Transplantation of wild-type healthy astroglial precursors into the spinal cord of ALS transgenic animals delayed the progression of the disease and prolonged the lifetime (Lepore et al., 2008). Inversely, implantation of hSOD1 mutant expressing astrocyte precursors into the spinal cord of wild type rodents was sufficient to initiate the motor neuron degeneration and ALS symptoms in vivo (Papadeas et al., 2011). Experiments in vitro also corroborated pathological role for astroglia. Mixed astrocyte and motor neuron co-cultures showed that astrocytes are responsible for elevation of factors causing neuronal damage (Bilsland et al., 2008; Di Giorgio et al., 2008, 2007; Ferraiuolo et al., 2011; Haidet-Phillips et al., 2011; Marchetto et al., 2008; Nagai et al., 2007; Phatnani et al., 2013). Those factors include, but are not limited to: (i) the excess of extracellular glutamate due to down-regulation of plasmalemmal EAAT2; (ii) an increase in the extracellular level of D-serine, a positive modulator of NMDA receptors, which may aggravate glutamate excitotoxicity; (iii) an increased secretion of prostaglandin E2, inflammatory mediator contributing to inflammatory

response and motor neuron deficiency; (iv) excessive release of interferon γ , detected in astrocytes expressing mutant SOD1; (v) secretion of Transforming Growth Factor β from astrocytes accompanied with an up-regulation of its type II receptor in neurons, which coincides with an onset of the disease; (vi) release of Pro-Nerve Growth Factor, which may trigger apoptosis in the motor neurons; and (vii) release of lipocalin 2, a transporter for lipids and lipophilic molecules, which is able to induce apoptotic cascade leading to neuronal death (reviewed in Valori et al., 2014). In addition, it was also found that immunoglobulin G isolated from ALS patients increased vesicular mobility in astrocytes which may indicate an increased secretion of various factors possibly associated with the pathology (Stenovec et al., 2011).

Consequences of expression of dysfunctional mutant hSOD1 gene are detrimental for both motor neurons and astrocytes because over-production/accumulation of ROS. As astrocytes are responsible for maintaining homeostasis of ROS (Dringen et al., 2000; Dringen and Hirrlinger, 2003), their incapability to adequately control ROS levels would promote the neuronal damage; this was attested by various genetic and pharmacological approaches (Cassina et al., 2008; Vargas et al., 2008). Similar combinations of genetic and pharmacological tactics are employed in an effort to directly modulate the expression of EAAT2. Antibiotic ceftriaxone, that stimulates glutamate uptake, has already passed Phase I and II of clinical trials suggesting good tolerance of therapeutic doses (Berry et al., 2013). Furthermore, there are positive results in preclinical trials with harmine, a beta-carboline alkaloid that increases EAAT2 expression in vivo (Li et al., 2011).

9.3. Huntington's disease

Huntington's disease (HD) is an autosomal dominant inherited disease caused by the nucleotide triplet, cytosine-adenosine-guanine (CAG) encoding glutamine, repeat in the exon 1 of the widely expressed huntingtin gene (Roze et al., 2008). This gene is encoding the huntingtin protein, which is expressed in the nervous system and is involved in various cellular functions including intracellular transport, regulation of transcription, development and control of apoptosis (Zheng and Diamond, 2012). Gene mutation results in the synthesis of mutant huntingtin protein (mhtt) containing an expanded polyglutamine section in its N-terminal portion. The neurodegeneration in HD mainly occurs in striatal medium spiny neurons and in cortical pyramidal neurons (Hedreen et al., 1991; Vonsattel et al., 1985).

Mutant huntingtin protein has been found not only in neurons but also in astroglia in brain tissue from human patients (Singhrao et al., 1998) and in mouse HD models (Faideau et al., 2010; Shin et al., 2005). In human HD tissues a prominent astrogliosis, which correlated with disease severity, has been well documented (Faideau et al., 2010; Vonsattel et al., 1985). Importantly, astroglial reactivity represents an early histopathological feature of HD, being detectable already at the lowest (grade 0) stage of the disease (Faideau et al., 2010). Astrogliosis has been also observed in animal HD models; for example, in the RosaHD/Nestin-Cre model (in which mhtt is expressed in all neural cells), reactive astrocytes are present in the cortex and striatum (Gu et al., 2005). In another mouse model, where mhtt was targeted to astrocytes by lentiviral expression, astrogliosis increased with animal age (Faideau et al., 2010).

Astrocytes also contribute to HD through compromised glutamate and potassium uptake. Excitotoxicity is generally acknowledged as an important feature of HD responsible for neuronal death (Gray, 2014). Expression of EAAT2 is significantly decreased in human HD tissues at mRNA and protein levels (Arzberger et al., 1997; Cross et al., 1986); incidentally, a decrease

in EAAT2 expression was correlated with the severity of the disease (Faideau et al., 2010). Reduction in the expression level of GLT-1 was also found in R6/2 HD mice in the cortex and striatum, and this decrease progresses with age (Behrens et al., 2002; Shin et al., 2005). Expression of the mhtt fragment containing 82 glutamine repeats and virally targeted to astrocytes similarly reduced expression of GLT-1 (Faideau et al., 2010). Experimental increase in GLT-1 expression in astrocytes expressing mhtt by a lentiviral vector decreased astroglial reactivity (Faideau et al., 2010), while treatment of R6/2 mice with ceftriaxone increased GLT-1 expression and improved motor symptoms (Faideau et al., 2010). Astrocytes may also contribute to excitotoxicity in HD context through increased glutamate release, which indeed was found in astroglial cells isolated from the cortex of the BACHD mouse model (Lee et al., 2013); this enhancement of glutamate release was linked to an increased expression of pyruvate carboxylate and hence an increased de novo production of glutamate. Besides compromised regulation of extracellular glutamate, astrocytes also display compromised potassium buffering, as recently demonstrated in HD mouse R6/2 and Q175 models (Tong et al., 2014). Indeed, HD mice had an increase in striatal extracellular K^+ levels in vivo. Astrocytes with mhtt nuclear inclusions had decreased expression of $K_{ir}4.1$ K^+ channels (representing the main molecular entity responsible for potassium siphoning/buffering) resulting in an increase of medium spiny neurons excitability in vitro. Thus, it appears that the deregulation of glutamate and potassium extracellular levels in astrocytes contributes to pathology seen in HD. Consequently, the identified molecular entities, i.e., EAAT2, pyruvate carboxylate and $K_{ir}4.1$ channels, may represent targets for novel therapeutic interventions in HD.

Astrocytes from HD mice and patients display higher levels of vascular endothelial growth factor-A, which promotes endothelial cell proliferation and may contribute to the augmented vascular density, otherwise observed in HD brains. Reactive astrogliosis may contribute to pericyte demise, causing a reduced pericyte overlay of cerebral blood vessels and worsened vascular reactivity. This, in turn, may modify the normal cerebral circulation and thus contribute to the disease progression (Hsiao et al., 2015).

9.4. Parkinson disease

Astroglial contribution to pathogenesis of Parkinson's disease (PD) has never been studied in great detail, and existing data are rather fragmentary (McGeer and McGeer, 2008). There is a general consensus that both environmental factors and genetic predisposition are ethologically relevant, with a particular role played by various toxic agents, which may involve astroglia (Rappold and Tieu, 2010). Probably the best example of such astroglia-mediated toxicity is PD induced by 1-methyl-4-phenyl-1,2,3,6-tetrahydropyridine (MPTP), a lipophilic substance, which after crossing the blood–brain barrier is accumulated in astrocytes, where it is converted, by monoamine-oxidase B (MAO-B), into the toxic metabolite, MPP⁺. This latter is released from astrocytes and is transported into dopaminergic neurons by the plasmalemmal dopamine transporter. Subsequently, MPP⁺ acts as a potent inhibitor of neuronal mitochondrial Complex I hence compromising ATP synthesis, increasing production of ROS and leading to cell death (Meredith et al., 2008). Additionally, MAO-B associated toxicity may be linked to excessive generation of ROS that are by-products of dopamine degradation (e.g., dopamine quinones) (Rappold and Tieu, 2010). Indeed, MAO-B is a central enzyme for catabolism of catecholamines, including dopamine, which in the CNS, is expressed almost exclusively in astrocytes (Eklom et al., 1993). Potential importance of MAO-B for PD development has been shown in experiments with transgenic mice, in which inducible over-expression of the enzyme triggered Parkinsonian

symptoms (Mallajosyula et al., 2008; Siddiqui et al., 2011). The levels of MAO-B increase in aging, which is a proven risk factor for PD, and moreover the expression levels of MAO-B correlate with neuronal death in the substantia nigra (Mahy et al., 2000; Fowler et al., 1980; Mandel et al., 2003). Incidentally, the lower risk of PD development in smokers is associated with a significantly decreased MAO-B activity (Fowler et al., 1996).

The astrogliosis in PD is generally quite mild, if at all existing, although some increase in GFAP expression has been observed in dopaminergic areas in idiopathic PD patients (Forno et al., 1992; Mirza et al., 2000), as well as in MPTP animal model (Sriram et al., 2004). There are indices of astroglia-related neuroprotection in the PD context; for example, selective activation of the transcription factor Nrf2 in astrocytes protects mice from MPTP-induced PD through boosting an anti-oxidant response (Chen et al., 2009). The overall glutathione levels (which again is mainly produced by astrocytes) were found to be greatly reduced (by ~40%) in PD, which may indicate the failure of astroglial protection against antioxidative stress (Rappold and Tieu, 2010). In a rare PD form linked to mutated orphan nuclear receptor Nurr1 expression death of dopaminergic neurons is mediated through astrocytes and microglia, which both produce neurotoxic factors (Saijo et al., 2009). Astrocytes also contain PD related proteins such as α -synuclein, parkin and phospho-tau; in the in vitro conditions astrocytes were found to accumulate α -synuclein and form large astrocytic Lewy bodies (Lee et al., 2010). In transgenic mice over-expressing α -synuclein in neurons α -synuclein immunoreactivity was present not only in neurons but also in astrocytes (Lee et al., 2010).

The α -synuclein (AS)-positive cytoplasmic aggregates were found in astroglial cells of synucleinopathies others than PD, such as dementia with Lewy bodies and multiple system atrophy (MSA). These glial AS-aggregates are hypothesized to provide a reduced trophic support contributing to the neuronal damage. In the PD only protoplasmic astroglia has an elevated cytoplasmic AS accumulation, whereas no evident changes were observed in fibrous astrocytes (Song et al., 2009). The protoplasmic astrocytes in PD apparently internalize AS without becoming reactive. This absence of the reactive response against a substantial neurodegeneration was also seen in MSA, although here, the oligodendroglial inclusions triggered an evident response, which was also observed in the fibrous astrocytes. Since astrocytic accumulation of AS enhances their vulnerability to oxidative stress and leads to apoptosis, degeneration of protoplasmic astrocytes may occur in all synucleinopathies (Song et al., 2009). There is increasing evidence that astroglial protein S100 β can operate as a cytokine or damage-associated molecular pattern protein not only in inflammatory but also in neurodegenerative diseases (Iuvone et al., 2007). Enhanced levels of S100 β were detected in the substantia nigra of PD subjects, as well as in the ventral midbrain of MPTP-treated mice (Sathe et al., 2012). Increased S100 β mRNA was also seen in the same region, supporting the notion that astrocytes, the main source of S100 β , may be implicated into PD pathobiology. Incidentally, the ablation of S100 β resulted in neuroprotection in a rodent model of PD (Sathe et al., 2012).

Finally, recently it has been found that the transplantation of astrocytes generated from glial precursors exerts a beneficial effect of experimental PD, probably through secretion of multiple trophic factors such as brain-derived neurotrophic factor, glial cell line-derived neurotrophic factor, neurturin and insulin-like growth factor 1; in addition, these astrocytes have high levels of antioxidants, including glutathione (Proschel et al., 2014).

10. Alexander disease

Alexander disease (AxD) is a rare, chronic and usually fatal neurodegenerative disorder, which may be defined as a primary

genetic astroglipathology. The AxD results from the expression of mutant GFAP, which leads to astroglial malfunction that, in turn, triggers severe deficits to the developing white matter. About 95% of diagnosed cases of AxD are caused by dominant gain-of-function mutations on the gene encoding GFAP. The histopathological sign of AxD is an accumulation of protein aggregates, known as Rosenthal fibers (Messing et al., 2012). The AxD is, in essence, a leukodystrophy, and according to the newest classification AxD is divided in two categories: (i) Type I characterized with an early onset and severe mental and physical disabilities, megalencephaly, seizures, spasticity, difficulty speaking and swallowing, and (ii) Type II with a later onset and somewhat different and milder clinical manifestations with normal development and head size, seldom presenting seizures, ataxia, visual and autonomic abnormalities, troubles in sleeping patterns, hyperreflexia, difficulty speaking and swallowing (Prust et al., 2011).

Astrocytes in AxD show signs of reactivity and simultaneous pathological remodeling; they secrete various factors, such as TNF- α and IL-1 β . Experimental over-expression and accumulation of GFAP in astrocytes to toxic levels induce functional abnormalities. These alterations include a reduction in EAAT2/GLT-1 on the plasma membrane, and thereby reduced glutamate clearance, decrease in the activity of proteasomes, increase in autophagy, and up-regulation of the stress-activated protein kinase/c-Jun N-terminal kinase (JNK) pathway (see (Messing et al., 2012) for details and references). Several mechanisms by which mutated GFAP acts on cellular functions have been suggested: (i) mutated GFAP through positive feedback loop inhibits proteasome function which activates JNK, and activated JNK directly further inhibits proteasome (Tang et al., 2006); (ii) mutated GFAP inactivates one or more proteins by degradation in the Rosenthal fibers where fragments of the small stress proteins, HSP27, α B crystalline, the 20S proteasome subunit, p-JNK, p62 and plectin, are detected (Messing et al., 2012).

Therapeutic strategies developed by several groups are based on proposed mechanisms and morphological manifestations and directed towards reduction of GFAP levels either by hindering synthesis or enhancing degradation, averting the formation of Rosenthal fibers with addition of α B crystalline, or preventing stress pathways activation and increasing glutamate transporter's expression on the plasma membrane. Some progress has been made on all fronts, although efforts have not yielded a successful treatment yet. More importantly, studies centered on GFAP and mechanisms of reactive astrocytes in AxD provide a significant insight for many other neurological disorders (Sosunov et al., 2013) that share similar astroglial appearances.

11. Glioma

Gliomas are neoplasms initiated in the brain, comprising about 60% of all diagnosed primary brain tumors. According to histopathological features and aggressiveness, the World Health Organization distinguishes four glioma grades, with the Grade IV or glioblastoma multiforme (GBM) being the most aggressive and commonly diagnosed. Despite robust approaches in the treatment of GBM, namely surgical intervention, radiation and chemotherapy, the prognosis for survival longer than the average of 12–14 months is very grim. As a general rule, gliomas with a more astrocyte-like phenotype are associated with a worse prognosis (Cohen and Colman, 2015; Jovcevska et al., 2013). One of the obstacles for the successful treatment of GBM is the infiltrative nature of their growth and close interactions with healthy brain cells, including astrocytes, oligodendrocytes, neurons, microglia and blood vessels.

Gliomas originate either from astrocytes and other glial cells or from their precursors. Many gliomas show some degree of similarity to various glial cell types and their progenitors. Tumors

originated from astrocytes are clinically categorized as either low-grade or high-grade astrocytomas based on their specific histological features (Furnari et al., 2007). Due to a profound heterogeneity within the tumor tissue, gliomas often show a complex mixed phenotype, which makes it more difficult to define their origin. Conceivably, they could evolve from various types of healthy cells turned rogue, or from one cell type which during uncontrollable growth accumulates (under influences from local environment) more mutations to form a complex polymorphic population of cancerous cells. Full understanding of the tumor progression, including defining the cell(s) of origin, is necessary for successful therapies.

One of the current hypotheses on the glioma origin suggests a cancer stem cell (CSC) to be the tumor initiator. The idea is appealing, since this renewable and multipotent CSC has been shown to exist in various gliomas and uphold proliferative tumor growth and progression (Park and Rich, 2009; Stiles and Rowitch, 2008). However, it still does not address the identity of healthy cells from which glioma originates. Speculatively, it is possible that astrocytes dedifferentiate into malignant cells directly or via an intermediate cell type, be that a SCS or a cell with a phenotype resembling astrocytic progenitors; malignant transformation in astrocytes induced by specific DNA mutations and controlling gene expression by DNA binding proteins has been demonstrated (Moon et al., 2011). Another possibility is that gliomas can develop directly from neural stem cells (i.e., nestin positive stem cells which typically develop into astrocytes) or via a SCS as an intermediary. From therapeutic standpoint defining the cell(s) giving rise to gliomas would allow early and effective interventions by either specifically destroying cells of origin without harming other healthy brain cells or interrupting signaling pathways that allow neoplastic transformation.

Frequent symptom and a side effect that seriously decreases quality of life in about 60–80% of glioma patients is tumor-associated epilepsy (Hildebrand et al., 2005; Kurzwelly et al., 2010; Lynam et al., 2007; Oberndorfer et al., 2002). As already discussed, there are several alterations observed in astrocytes associated with seizure/epilepsy affected brain regions. One of them is aberrant glutamate homeostasis due to the activity of Sxc⁻ which represents an underlying cause of epileptic seizures in some glioma-bearing animals and patients (Buckingham et al., 2011). Increased levels of glutamate released from glioma were demonstrated in cultures (Ye and Sontheimer, 1999), in animal models (Buckingham et al., 2011) and in high grade astrocytoma patients (Roslin et al., 2003). In addition to release of glutamate via Sxc⁻, it seems that a decrease in expression of EAAT1/2 on reactive astrocytes in the peritumoral tissue contributes to glutamate overload in the extracellular space (de Groot et al., 2005; Takano et al., 2001). Increased expression of astroglial marker GFAP in the surrounding tissue, i.e., tumor-induced astroglialosis, was found to positively correlate with the tumor size both in mouse models of glioma (Lee et al., 2011), and in glioma patients (Burel-Vandenbos et al., 2011; Raore et al., 2011). The tumor cells, however, especially those of high-grade astrocytomas, frequently lose most of their GFAP expression, likely indicating the undifferentiated state of these cells, rather than the contribution to tumor development and progression (Wilhelmsson et al., 2003).

In addition to astroglia contributions to maintaining extracellular CNS homeostasis, as already highlighted throughout this review, astrocytes also serve as the metabolic hub. At physiological conditions, astrocytes show a high glycolytic rate resulting in production of lactate, while maintaining active tricarboxylic acid cycle to synthesize *de novo* glutamate as they express pyruvate carboxylase (Bouzier-Sore and Pellerin, 2013); besides the glycolytic utilization of glucose, astrocytes can store it in the form of glycogen. Gliomas are well equipped to use these pathways to

generate non-physiologically high concentrations of lactate and glutamate, as assessed in patients in vivo using microdialysis (Marcus et al., 2010). It turned out that gliomas (similar to neurons) are needy of glutamine, otherwise provided to the brain parenchyma by astrocyte via the glutamate-glutamine cycle (Wise and Thompson, 2010). Preferential interference with mentioned (or other yet undisclosed) glioma metabolic pathways may provide a target for novel adjuvant therapies for these neoplasms.

12. Concluding remarks

The brain is a complex adaptive matter. Thus, it should come as no surprise that the neuron-centric pathological doctrine has limited success in producing the major new breakthroughs in the prevention and therapy of the brain disorders. In part this is due to the lack of attention to other cells in this organ. Namely, it is abundantly clear that astrocytes, in their primary role of maintaining the overall homeostasis of the nervous system, are key elements of most if not all the brain disorders. Insult to the brain, be that mechanical, chemical or otherwise, has its toll on astrocytes, which undergo complex morpho-functional changes that can be good, bad or ugly for the course of the disorder. A display of these astrocytic changes can be grossly identified as reactivity, which comes in two flavors pending on the (dis)organization of the astrocytic territorial domains, atrophy with loss of function and pathological remodeling. Although at present we mainly grapple with defining the pathophysiology of astrocytes and demystifying their responses as merely secondary detrimental processes, one can see light at the end of the tunnel in the discoveries of the primary causes of some disorders as the astrocyte-autonomous blemishes. For instance, the genetic primary neuropathology known as Alexander disease stems from the expression of mutant GFAP that affects astroglial function and results in severe damage to the white matter. By identifying and cataloguing such molecular entities clearly defining the pathogenic potential of astrocytes, we could allow for future translational medicine, i.e., generation of deliverables for the containment and cure of disorders. Certainly, any organ disorder can come from dysfunction(s) of any and the entire cellular constitutes, and the brain is not an exception. Although we here entertained the astrocyte-centric view of the brain pathology, by no means we support the notion that this prodigy alone would achieve the curation of the brain disorders. Rather, such noble task will surely require a holistic and multi-disciplinary approach that will take in contemplation the concerted operation of all the cell types in the brain.

Acknowledgements

AV was supported in part by the grant (agreement from August 27 2013 No. 02.B.49.21.0003) between The Ministry of Education and Science of the Russian Federation and Lobachevsky State University of Nizhny Novgorod and by the grant of the Russian Scientific Foundation No. 14-15-00633. VP acknowledges the support by the National Institutes of Health (The Eunice Kennedy Shriver National Institute of Child Health and Human Development award HD078678).

References

- Abramov, A.Y., Canevari, L., Duchen, M.R., 2003. Changes in intracellular calcium and glutathione in astrocytes as the primary mechanism of amyloid neurotoxicity. *J. Neurosci.* 23, 5088–5095.
- Abramov, A.Y., Canevari, L., Duchen, M.R., 2004. Calcium signals induced by amyloid β peptide and their consequences in neurons and astrocytes in culture. *Biochim. Biophys. Acta* 1742, 81–87.
- Agulhon, C., Petravic, J., McMullen, A.B., Sweger, E.J., Minton, S.K., Taves, S.R., Casper, K.B., Fiacco, T.A., McCarthy, K.D., 2008. What is the role of astrocyte calcium in neurophysiology? *Neuron* 59, 932–946.
- Albrecht, J., Zielinska, M., Norenberg, M.D., 2010. Glutamine as a mediator of ammonia neurotoxicity: a critical appraisal. *Biochem. Pharmacol.* 80, 1303–1308.
- Allaman, I., Gavillet, M., Belanger, M., Laroche, T., Vierti, D., Lashuel, H.A., Magistretti, P.J., 2010. Amyloid- β aggregates cause alterations of astrocytic metabolic phenotype: impact on neuronal viability. *J. Neurosci.* 30, 3326–3338.
- Alzheimer, A., 1907. Über eine eigenartige Erkrankung der Hirnrinde. *Allg. Z. Psychiat. Psych. Gericht. Med.* 64, 146–148.
- Alzheimer, A., 1910. Beiträge zur Kenntnis der pathologischen Neuroglia und ihrer Beziehungen zu den Abbauvorgängen im Nervengewebe. In: Nissl, F., Alzheimer, A. (Eds.), *Histologische und histopathologische Arbeiten über die Grosshirnrinde mit besonderer Berücksichtigung der pathologischen Anatomie der Geisteskrankheiten*. Gustav Fischer, Jena, pp. 401–562.
- Anderson, M.A., Ao, Y., Sofroniew, M.V., 2014. Heterogeneity of reactive astrocytes. *Neurosci. Lett.* 565, 23–29.
- Armstrong, V., Reichel, C.M., Doti, J.F., Crawford, C.A., McDougall, S.A., 2004. Repeated amphetamine treatment causes a persistent elevation of glial fibrillary acidic protein in the caudate-putamen. *Eur. J. Pharmacol.* 488, 111–115.
- Aronica, E., Sandau, U.S., Iyer, A., Boison, D., 2013. Glial adenosine kinase – a neuropathological marker of the epileptic brain. *Neurochem. Int.* 63, 688–695.
- Aronica, E., Zurolo, E., Iyer, A., de Groot, M., Anink, J., Carbonell, C., van Vliet, E.A., Baayen, J.C., Boison, D., Gorter, J.A., 2011. Upregulation of adenosine kinase in astrocytes in experimental and human temporal lobe epilepsy. *Epilepsia* 52, 1645–1655.
- Arzberger, T., Krampfl, K., Leimgruber, S., Weindl, A., 1997. Changes of NMDA receptor subunit (NR1, NR2B) and glutamate transporter (GLT1) mRNA expression in Huntington's disease – an in situ hybridization study. *J. Neuropathol. Exp. Neurol.* 56, 440–454.
- Attwell, D., Buchan, A.M., Charpak, S., Lauritzen, M., Macvicar, B.A., Newman, E.A., 2010. Glial and neuronal control of brain blood flow. *Nature* 468, 232–243.
- Baker, D.A., Madayag, A., Kristiansen, L.V., Meador-Woodruff, J.H., Haroutunian, V., Raju, I., 2008. Contribution of cystine-glutamate antiporters to the psychotomimetic effects of phencyclidine. *Neuropsychopharmacology* 33, 1760–1772.
- Banasr, M., Duman, R.S., 2008. Glial loss in the prefrontal cortex is sufficient to induce depressive-like behaviors. *Biol. Psychiatry* 64, 863–870.
- Barley, K., Dracheva, S., Byne, W., 2009. Subcortical oligodendrocyte- and astrocyte-associated gene expression in subjects with schizophrenia, major depression and bipolar disorder. *Schizophr. Res.* 112, 54–64.
- Bauer, D., Gupta, D., Haroutunian, V., Meador-Woodruff, J.H., McCullumsmith, R.E., 2008. Abnormal expression of glutamate transporter and transporter interacting molecules in prefrontal cortex in elderly patients with schizophrenia. *Schizophr. Res.* 104, 108–120.
- Bauer, D., Haroutunian, V., Meador-Woodruff, J.H., McCullumsmith, R.E., 2010. Abnormal glycosylation of EAAT1 and EAAT2 in prefrontal cortex of elderly patients with schizophrenia. *Schizophr. Res.* 117, 92–98.
- Beach, T.G., McGeer, E.G., 1988. Lamina-specific arrangement of astrocytic gliosis and senile plaques in Alzheimer's disease visual cortex. *Brain Res.* 463, 357–361.
- Beauquis, J., Pavia, P., Pomilio, C., Vinuesa, A., Podlutska, N., Galvan, V., Saravia, F., 2013. Environmental enrichment prevents astroglial pathological changes in the hippocampus of APP transgenic mice, model of Alzheimer's disease. *Exp. Neurol.* 239, 28–37.
- Beauquis, J., Vinuesa, A., Pomilio, C., Pavia, P., Galvan, V., Saravia, F., 2014. Neuronal and glial alterations, increased anxiety, and cognitive impairment before hippocampal amyloid deposition in PDAPP mice, model of Alzheimer's disease. *Hippocampus* 24, 257–269.
- Bechtholt-Gompf, A.J., Walther, H.V., Adams, M.A., Carlezon Jr., W.A., Ongur, D., Cohen, B.M., 2010. Blockade of astrocytic glutamate uptake in rats induces signs of anhedonia and impaired spatial memory. *Neuropsychopharmacology* 35, 2049–2059.
- Bedner, P., Dupper, A., Huttmann, K., Müller, J., Herde, M.K., Dublin, P., Deshpande, T., Schramm, J., Haussler, U., Haas, C.A., Henneberger, C., Theis, M., Steinhäuser, C., 2015. Astrocyte uncoupling as a cause of human temporal lobe epilepsy. *Brain* 138, 1208–1222.
- Behrens, P.F., Franz, P., Woodman, B., Lindenberg, K.S., Landwehrmeyer, G.B., 2002. Impaired glutamate transport and glutamate-glutamine cycling: downstream effects of the Huntington mutation. *Brain* 125, 1908–1922.
- Bell, R.D., Zlokovic, B.V., 2009. Neurovascular mechanisms and blood-brain barrier disorder in Alzheimer's disease. *Acta Neuropathol.* 118, 103–113.
- Bendikov, I., Nadri, C., Amar, S., Panizzutti, R., De Miranda, J., Wolosker, H., Agam, G., 2007. A CSF and postmortem brain study of D-serine metabolic parameters in schizophrenia. *Schizophr. Res.* 90, 41–51.
- Benedetti, B., Matyash, V., Kettenmann, H., 2011. Astrocytes control GABAergic inhibition of neurons in the mouse barrel cortex. *J. Physiol.* 589, 1159–1172.
- Bernard, R., Kerman, I.A., Thompson, R.C., Jones, E.G., Bunney, W.E., Barchas, J.D., Schatzberg, A.F., Myers, R.M., Akil, H., Watson, S.J., 2011. Altered expression of glutamate signaling, growth factor, and glia genes in the locus coeruleus of patients with major depression. *Mol. Psychiatry* 16, 634–646.
- Berry, J.D., Shefner, J.M., Conwit, R., Schoenfeld, D., Keroack, M., Felsenstein, D., Krivickas, L., David, W.S., Vriesendorp, F., Pestronk, A., Caress, J.B., Katz, J., Simpson, E., Rosenfeld, J., Pascuzzi, R., Glass, J., Reznia, K., Rothstein, J.D., Greenblatt, D.J., Cudkowicz, M.E., Northeast, A.L.S.C., 2013. Design and initial results of a multi-phase randomized trial of ceftriaxone in amyotrophic lateral sclerosis. *PLOS ONE* 8, e61177.
- Bertram, L., Lill, C.M., Tanzi, R.E., 2010. The genetics of Alzheimer disease: back to the future. *Neuron* 68, 270–281.
- Beschorner, R., Dietz, K., Schauer, N., Mittelbronn, M., Schluesener, H.J., Trautmann, K., Meyermann, R., Simon, P., 2007. Expression of EAAT1 reflects a possible

- neuroprotective function of reactive astrocytes and activated microglia following human traumatic brain injury. *Histol. Histopathol.* 22, 515–526.
- Bigl, M., Bruckner, M.K., Arendt, T., Bigl, V., Eschrich, K., 1999. Activities of key glycolytic enzymes in the brains of patients with Alzheimer's disease. *J. Neural Transm.* 106, 499–511.
- Bilsland, L.G., Nirmalanathan, N., Yip, J., Greensmith, L., Duchen, M.R., 2008. Expression of mutant SOD1 in astrocytes induces functional deficits in motor neuron mitochondria. *J. Neurochem.* 107, 1271–1283.
- Blass, J.P., Sheu, R.K., Gibson, G.E., 2000. Inherent abnormalities in energy metabolism in Alzheimer disease. Interaction with cerebrovascular compromise. *Ann. N. Y. Acad. Sci.* 903, 204–221.
- Bockenbauer, D., Feather, S., Stanesco, H.C., Bandulik, S., Zdebek, A.A., Reichold, M., Tobin, J., Lieberer, E., Sterner, C., Landouere, G., Arora, R., Sirimanna, T., Thompson, D., Cross, J.H., van't Hoff, W., Al Masri, O., Tullus, K., Yeung, S., Anikster, Y., Klootwijk, E., Hubank, M., Dillon, M.J., Heitzmann, D., Arcos-Burgos, M., Knepper, M.A., Dobbie, A., Gahl, W.A., Warth, R., Sheridan, E., Kleta, R., 2009. Epilepsy, ataxia, sensorineural deafness, tubulopathy, and KCNJ10 mutations. *N. Engl. J. Med.* 360, 1960–1970.
- Boison, D., Aronica, E., 2015. Comorbidities in neurology: is adenosine the common link? *Neuropharmacology* 97, 18–34.
- Bordey, A., Sontheimer, H., 1998. Properties of human glial cells associated with epileptic seizure foci. *Epilepsy Res.* 32, 286–303.
- Bouzier-Sore, A.K., Pellerin, L., 2013. Unraveling the complex metabolic nature of astrocytes. *Front. Cell. Neurosci.* 7, 179.
- Bowers, M.S., Kalivas, P.W., 2003. Forebrain astroglial plasticity is induced following withdrawal from repeated cocaine administration. *Eur. J. Neurosci.* 17, 1273–1278.
- Bowley, M.P., Drevets, W.C., Ongur, D., Price, J.L., 2002. Low glial numbers in the amygdala in major depressive disorder. *Biol. Psychiatry* 52, 404–412.
- Braun, K., Antemano, R., Helmeke, C., Buchner, M., Poeggel, G., 2009. Juvenile separation stress induces rapid region- and layer-specific changes in S100 β and glial fibrillary acidic protein-immunoreactivity in astrocytes of the rodent medial prefrontal cortex. *Neuroscience* 160, 629–638.
- Bridges, R.J., Natale, N.R., Patel, S.A., 2012. System xc⁻ cystine/glutamate antiporter: an update on molecular pharmacology and roles within the CNS. *Br. J. Pharmacol.* 165, 20–34.
- Brissette, C.A., Kees, E.D., Burke, M.M., Gaultney, R.A., Floden, A.M., Watt, J.A., 2013. The multifaceted responses of primary human astrocytes and brain microvascular endothelial cells to the Lyme disease spirochete, *Borrelia burgdorferi*. *ASN Neuro* 5, 221–229.
- Brusilow, S.W., Koehler, R.C., Traystman, R.J., Cooper, A.J., 2010. Astrocyte glutamine synthetase: importance in hyperammonemic syndromes and potential target for therapy. *Neurotherapeutics* 7, 452–470.
- Buckingham, S.C., Campbell, S.L., Haas, B.R., Montana, V., Robel, S., Ogunrinu, T., Sontheimer, H., 2011. Glutamate release by primary brain tumors induces epileptic activity. *Nat. Med.* 17, 1269–1274.
- Burda, J.E., Bernstein, A.M., Sofroniew, M.V., 2015. Astrocyte roles in traumatic brain injury. *Exp. Neurol.* <http://dx.doi.org/10.1016/j.expneurol.2015.03.020>.
- Burda, J.E., Sofroniew, M.V., 2014. Reactive gliosis and the multicellular response to CNS damage and disease. *Neuron* 81, 229–248.
- Burel-Vandenbos, F., Benchetrit, M., Miquel, C., Fontaine, D., Auvergne, R., Lebrun-Frenay, C., Cardot-Leccia, N., Michiels, J.F., Paquis-Flucklinger, V., Virolle, T., 2011. EGFR immunolabeling pattern may discriminate low-grade gliomas from gliosis. *J. Neurooncol.* 102, 171–178.
- Bushong, E.A., Martone, M.E., Jones, Y.Z., Ellisman, M.H., 2002. Protoplasmic astrocytes in CA1 stratum radiatum occupy separate anatomical domains. *J. Neurosci.* 22, 183–192.
- Butterworth, R.F., 2011. Hepatic encephalopathy: a central neuroinflammatory disorder? *Hepatology* 53, 1372–1376.
- Büttner, A., Weis, S., 2006. Neuropathological alterations in drug abusers. The involvement of neurons, glial and vascular systems. *Forensic Sci. Med. Pathol.* 2, 115–126.
- Cassina, P., Cassina, A., Pehar, M., Castellanos, R., Gandelman, M., de Leon, A., Robinson, K.M., Mason, R.P., Beckman, J.S., Barbeito, L., Radi, R., 2008. Mitochondrial dysfunction in SOD1G93A-bearing astrocytes promotes motor neuron degeneration: prevention by mitochondrial-targeted antioxidants. *J. Neurosci.* 28, 4115–4122.
- Cellot, G., Cherubini, E., 2014. GABAergic signaling as therapeutic target for autism spectrum disorders. *Front. Pediatr.* 2, 70.
- Chaboub, L.S., Deneen, B., 2012. Developmental origins of astrocyte heterogeneity: the final frontier of CNS development. *Dev. Neurosci.* 34, 379–388.
- Chauhan, V.S., Kluttz, J.M., Bost, K.L., Marriott, I., 2011. Prophylactic and therapeutic targeting of the neurokinin-1 receptor limits neuroinflammation in a murine model of pneumococcal meningitis. *J. Immunol.* 186, 7255–7263.
- Chauhan, V.S., Sterka Jr., D.G., Gray, D.L., Bost, K.L., Marriott, I., 2008. Neurogenic exacerbation of microglial and astrocyte responses to *Neisseria meningitidis* and *Borrelia burgdorferi*. *J. Immunol.* 180, 8241–8249.
- Cheeran, M.C., Hu, S., Sheng, W.S., Peterson, S.E., Tran, H.T., McCann, A.E., Parast, M.M., Li, S., 2003. CXCL10 production from cytomegalovirus-stimulated microglia is regulated by both human and viral interleukin-10. *J. Virol.* 77, 4502–4515.
- Chen, C., Jiang, P., Xue, H., Peterson, S.E., Tran, H.T., McCann, A.E., Parast, M.M., Li, S., Pleasure, D.E., Laurent, L.C., Loring, J.F., Liu, Y., Deng, W., 2014. Role of astroglia in Down's syndrome revealed by patient-derived human-induced pluripotent stem cells. *Nat. Commun.* 5, 4430.
- Chen, P.C., Vargas, M.R., Pani, A.K., Smeyne, R.J., Johnson, D.A., Kan, Y.W., Johnson, J.A., 2009. Nrf2-mediated neuroprotection in the MPTP mouse model of Parkinson's disease: critical role for the astrocyte. *Proc. Natl. Acad. Sci. U. S. A.* 106, 2933–2938.
- Churchill, M.J., Wesselingh, S.L., Cowley, D., Pardo, C.A., McArthur, J.C., Brew, B.J., Gorry, P.R., 2009. Extensive astrocyte infection is prominent in human immunodeficiency virus-associated dementia. *Ann. Neurol.* 66, 253–258.
- Cohen, A.L., Colman, H., 2015. Glioma biology and molecular markers. *Cancer Treat. Res.* 163, 15–30.
- Cotter, D., Mackay, D., Chana, G., Beasley, C., Landau, S., Everall, I.P., 2002. Reduced neuronal size and glial cell density in area 9 of the dorsolateral prefrontal cortex in subjects with major depressive disorder. *Cereb. Cortex* 12, 386–394.
- Cotter, D., Mackay, D., Landau, S., Kerwin, R., Everall, I., 2001. Reduced glial cell density and neuronal size in the anterior cingulate cortex in major depressive disorder. *Arch. Gen. Psychiatry* 58, 545–553.
- Coulter, D.A., Eid, T., 2012. Astrocytic regulation of glutamate homeostasis in epilepsy. *Glia* 60, 1215–1226.
- Cross, A.J., Slater, P., Reynolds, G.P., 1986. Reduced high-affinity glutamate uptake sites in the brains of patients with Huntington's disease. *Neurosci. Lett.* 67, 198–202.
- Cullen, K.M., Halliday, G.M., 1994. Chronic alcoholics have substantial glial pathology in the forebrain and diencephalon. *Alcohol. Alcohol. Suppl.* 2, 253–257.
- Curcio, L., Podda, M.V., Leone, L., Piacentini, R., Mastrodonato, A., Cappelletti, P., Sacchi, S., Pollegioni, L., Grassi, C., D'Ascenzo, M., 2013. Reduced D-serine levels in the nucleus accumbens of cocaine-treated rats hinder the induction of NMDA receptor-dependent synaptic plasticity. *Brain* 136, 1216–1230.
- Czeh, B., Di Benedetto, B., 2013. Antidepressants act directly on astrocytes: evidences and functional consequences. *Eur. Neuropsychopharmacol.* 23, 171–185.
- Czeh, B., Simon, M., Schmelting, B., Hiemke, C., Fuchs, E., 2006. Astroglial plasticity in the hippocampus is affected by chronic psychosocial stress and concomitant fluoxetine treatment. *Neuropsychopharmacology* 31, 1616–1626.
- de Groot, J.F., Liu, T.J., Fuller, G., Yung, W.K., 2005. The excitatory amino acid transporter-2 induces apoptosis and decreases glioma growth in vitro and in vivo. *Cancer Res.* 65, 1934–1940.
- DeJesus-Hernandez, M., Mackenzie, I.R., Boeve, B.F., Boxer, A.L., Baker, M., Rutherford, N.J., Nicholson, A.M., Finch, N.A., Flynn, H., Adamson, J., Kouri, N., Wojtas, A., Sengdy, P., Hsiung, G.Y., Karydas, A., Seeley, W.W., Josephs, K.A., Coppola, G., Geschwind, D.H., Wszolek, Z.K., Feldman, H., Knopman, D.S., Petersen, R.C., Miller, B.L., Dickson, D.W., Boylan, K.B., Graff-Radford, N.R., Rademakers, R., 2011. Expanded GGGGCC hexanucleotide repeat in noncoding region of C9ORF72 causes chromosome 9p-linked FTD and ALS. *Neuron* 72, 245–256.
- Demarque, M., Villeneuve, N., Manent, J.B., Becq, H., Represa, A., Ben-Ari, Y., Aniksztejn, L., 2004. Glutamate transporters prevent the generation of seizures in the developing rat neocortex. *J. Neurosci.* 24, 3289–3294.
- Deng, H.X., Chen, W., Hong, S.T., Boycott, K.M., Gorrie, G.H., Siddique, N., Yang, Y., Fecto, F., Shi, Y., Zhai, H., Jiang, H., Hirano, M., Rampersaud, E., Jansen, G.H., Donkervoort, S., Bigio, E.H., Brooks, B.R., Ajroud, K., Sufit, R.L., Haines, J.L., Mugnaini, E., Pericak-Vance, M.A., Siddique, T., 2011. Mutations in UBQLN2 cause dominant X-linked juvenile and adult-onset ALS and ALS/dementia. *Nature* 477, 211–215.
- DeWitt, D.A., Perry, G., Cohen, M., Doller, C., Silver, J., 1998. Astrocytes regulate microglial phagocytosis of senile plaque cores of Alzheimer's disease. *Exp. Neurol.* 149, 329–340.
- Di Giorgio, F.P., Boulting, G.L., Bobrowicz, S., Eggan, K.C., 2008. Human embryonic stem cell-derived motor neurons are sensitive to the toxic effect of glial cells carrying an ALS-causing mutation. *Cell Stem Cell* 3, 637–648.
- Di Giorgio, F.P., Carrasco, M.A., Siao, M.C., Maniatis, T., Eggan, K., 2007. Non-cell autonomous effect of glia on motor neurons in an embryonic stem cell-based ALS model. *Nat. Neurosci.* 10, 608–614.
- Djukic, B., Casper, K.B., Philpot, B.D., Chin, L.S., McCarthy, K.D., 2007. Conditional knock-out of K_v4.1 leads to glial membrane depolarization, inhibition of potassium and glutamate uptake, and enhanced short-term synaptic potentiation. *J. Neurosci.* 27, 11354–11365.
- Dong, L., Li, B., Verkhratsky, A., Peng, L., 2015. Cell type-specific *in vivo* expression of genes encoding signalling molecules in the brain in response to chronic mild stress and chronic treatment with fluoxetine. *Psychopharmacology (Berl.)* 232, 2827–2835.
- Dotevall, L., Rosengren, L.E., Hagberg, L., 1996. Increased cerebrospinal fluid levels of glial fibrillary acidic protein (GFAP) in Lyme neuroborreliosis. *Infection* 24, 125–129.
- Dringen, R., Gutterer, J.M., Hirrlinger, J., 2000. Glutathione metabolism in brain metabolic interaction between astrocytes and neurons in the defense against reactive oxygen species. *Eur. J. Biochem.* 267, 4912–4916.
- Dringen, R., Hirrlinger, J., 2003. Glutathione pathways in the brain. *Biol. Chem.* 384, 505–516.
- Eid, T., Tu, N., Lee, T.S., Lai, J.C., 2013. Regulation of astrocyte glutamine synthetase in epilepsy. *Neurochem. Int.* 63, 670–681.
- Ekblom, J., Jossan, S.S., Bergstrom, M., Orelund, L., Walum, E., Aquilonius, S.M., 1993. Monoamine oxidase-B in astrocytes. *Glia* 8, 122–132.
- Eroglu, C., Barres, B.A., 2010. Regulation of synaptic connectivity by glia. *Nature* 468, 223–231.
- Esen, N., Shuffield, D., Syed, M.M., Kielian, T., 2007. Modulation of connexin expression and gap junction communication in astrocytes by the gram-positive bacterium *S. aureus*. *Glia* 55, 104–117.
- Esen, N., Tanga, F.Y., DeLeo, J.A., Kielian, T., 2004. Toll-like receptor 2 (TLR2) mediates astrocyte activation in response to the Gram-positive bacterium *Staphylococcus aureus*. *J. Neurochem.* 88, 746–758.

- Faideau, M., Kim, J., Cormier, K., Gilmore, R., Welch, M., Auregan, G., Dufour, N., Guillemier, M., Brouillet, E., Hantraye, P., Deglon, N., Ferrante, R.J., Bonvento, G., 2010. *In vivo* expression of polyglutamine-expanded huntingtin by mouse striatal astrocytes impairs glutamate transport: a correlation with Huntington's disease subjects. *Hum. Mol. Genet.* 19, 3053–3067.
- Falkai, P., Bogerts, B., 1986. Cell loss in the hippocampus of schizophrenics. *Eur. Arch. Psychiatry Neurol. Sci.* 236, 154–161.
- Farkas, E., Luiten, P.G., 2001. Cerebral microvascular pathology in aging and Alzheimer's disease. *Prog. Neurobiol.* 64, 575–611.
- Fatemi, S.H., Folsom, T.D., Reutiman, T.J., Lee, S., 2008. Expression of astrocytic markers aquaporin 4 and connexin 43 is altered in brains of subjects with autism. *Synapse* 62, 501–507.
- Fattore, L., Puddu, M.C., Picciau, S., Cappai, A., Fratta, W., Serra, G.P., Spiga, S., 2002. Astroglial *in vivo* response to cocaine in mouse dentate gyrus: a quantitative and qualitative analysis by confocal microscopy. *Neuroscience* 110, 1–6.
- Felipo, V., 2013. Hepatic encephalopathy: effects of liver failure on brain function. *Nat. Rev. Neurosci.* 14, 851–858.
- Ferraiuolo, L., Higginbottom, A., Heath, P.R., Barber, S., Greenald, D., Kirby, J., Shaw, P.J., 2011. Dysregulation of astrocyte-motoneuron cross-talk in mutant superoxide dismutase 1-related amyotrophic lateral sclerosis. *Brain* 134, 2627–2641.
- Forno, L.S., DeLaney, L.E., Irwin, I., Di Monte, D., Langston, J.W., 1992. Astrocytes and Parkinson's disease. *Prog. Brain Res.* 94, 429–436.
- Fowler, C.J., Wiberg, A., Oreland, L., Marcusson, J., Winblad, B., 1980. The effect of age on the activity and molecular properties of human brain monoamine oxidase. *J. Neural. Transm.* 49, 1–20.
- Fowler, J.S., Volkow, N.D., Wang, G.J., Pappas, N., Logan, J., MacGregor, R., Alexoff, D., Shea, C., Schlyer, D., Wolf, A.P., Warner, D., Zezulkova, I., Cilento, R., 1996. Inhibition of monoamine oxidase B in the brains of smokers. *Nature* 379, 733–736.
- Franke, H., 1995. Influence of chronic alcohol treatment on the GFAP-immunoreactivity in astrocytes of the hippocampus in rats. *Acta Histochem.* 97, 263–271.
- Friend, D.M., Keefe, K.A., 2013. Glial reactivity in resistance to methamphetamine-induced neurotoxicity. *J. Neurochem.* 125, 566–574.
- Furman, J.L., Sama, D.M., Gant, J.C., Beckett, T.L., Murphy, M.P., Bachstetter, A.D., Van Eldik, L.J., Norris, C.M., 2012. Targeting astrocytes ameliorates neurologic changes in a mouse model of Alzheimer's disease. *J. Neurosci.* 32, 16129–16140.
- Furnari, F.B., Fenton, T., Bachoo, R.M., Mukasa, A., Stommel, J.M., Stegh, A., Hahn, W.C., Ligon, K.L., Louis, D.N., Brennan, C., Chin, L., DePinho, R.A., Cavenee, W.K., 2007. Malignant astrocytic glioma: genetics, biology, and paths to treatment. *Genes Dev.* 21, 2683–2710.
- Giaume, C., Kirchhoff, F., Matute, C., Reichenbach, A., Verkhratsky, A., 2007. Glia: the fulcrum of brain diseases. *Cell Death Differ.* 14, 1324–1335.
- Giovedi, S., Corradi, A., Fassio, A., Benfenati, F., 2014. Involvement of synaptic genes in the pathogenesis of autism spectrum disorders: the case of synapsins. *Front. Pediatr.* 2, 94.
- Gipson, C.D., Reissner, K.J., Kupchik, Y.M., Smith, A.C., Stankeviciute, N., Hensley-Simon, M.E., Kalivas, P.W., 2013. Reinstatement of nicotine seeking is mediated by glutamatergic plasticity. *Proc. Natl. Acad. Sci. U. S. A.* 110, 9124–9129.
- Gleichman, A.J., Carmichael, S.T., 2014. Astrocytic therapies for neuronal repair in stroke. *Neurosci. Lett.* 565, 47–52.
- Gorg, B., Morwinsky, A., Keitel, V., Qvartskhava, N., Schror, K., Haussinger, D., 2010. Ammonia triggers exocytotic release of l-glutamate from cultured rat astrocytes. *Glia* 58, 691–705.
- Gray, L.R., Turville, S.G., Hitchen, T.L., Cheng, W.J., Ellett, A.M., Salimi, H., Roche, M.J., Wesselingh, S.L., Gorry, P.R., Churchill, M.J., 2014. HIV-1 entry and trans-infection of astrocytes involves CD81 vesicles. *PLOS ONE* 9, e90620.
- Gray, M., 2014. The role of astrocytes in Huntington's disease. In: Parpura, V., Verkhratsky, A. (Eds.), *Pathological Potential of Neuroglia. Possible New Targets for Medical Intervention*. Springer, New York/Heidelberg/Dordrecht/London, pp. 213–229.
- Griffin, W.S., Stanley, L.C., Ling, C., White, L., MacLeod, V., Perrot, L.J., White 3rd, C.L., Araoz, C., 1989. Brain interleukin 1 and S-100 immunoreactivity are elevated in Down syndrome and Alzheimer disease. *Proc. Natl. Acad. Sci. U. S. A.* 86, 7611–7615.
- Grolla, A.A., Sim, J.A., Lim, D., Rodriguez, J.J., Genazzani, A.A., Verkhratsky, A., 2013. Amyloid- β and Alzheimer's disease type pathology differentially affects the calcium signalling toolkit in astrocytes from different brain regions. *Cell Death Dis.* 4, e623.
- Gu, X., Li, C., Wei, W., Lo, V., Gong, S., Li, S.H., Iwasato, T., Itohara, S., Li, X.J., Mody, I., Heintz, N., Yang, X.W., 2005. Pathological cell-cell interactions elicited by a neuropathogenic form of mutant Huntingtin contribute to cortical pathogenesis in HD mice. *Neuron* 46, 433–444.
- Guilarte, T.R., Nihei, M.K., McGlothlan, J.L., Howard, A.S., 2003. Methamphetamine-induced deficits of brain monoaminergic neuronal markers: distal axotomy or neuronal plasticity. *Neuroscience* 122, 499–513.
- Haack, N., Dublin, P., Rose, C.R., 2014. Dysbalance of astrocyte calcium under hyperammonemic conditions. *PLOS ONE* 9, e105832.
- Haberle, J., Shahbeck, N., Ibrahim, K., Hoffmann, G.F., Ben-Omran, T., 2011. Natural course of glutamine synthetase deficiency in a 3 year old patient. *Mol. Genet. Metab.* 103, 89–91.
- Haidet-Phillips, A.M., Hester, M.E., Miranda, C.J., Meyer, K., Braun, L., Frakes, A., Song, S., Likhite, S., Murtha, M.J., Foust, K.D., Rao, M., Eagle, A., Kammesheidt, A., Christensen, A., Mendell, J.R., Burghes, A.H., Kaspar, B.K., 2011. Astrocytes from familial and sporadic ALS patients are toxic to motor neurons. *Nat. Biotechnol.* 29, 824–828.
- Hardiman, O., 2011. Management of respiratory symptoms in ALS. *J. Neurol.* 258, 359–365.
- Harvey, B.K., Airavaara, M., Hinzman, J., Wires, E.M., Chiocco, M.J., Howard, D.B., Shen, H., Gerhardt, G., Hoffer, B.J., Wang, Y., 2011. Targeted over-expression of glutamate transporter 1 (GLT-1) reduces ischemic brain injury in a rat model of stroke. *PLoS ONE* 6, e22135.
- Hazell, A.S., 2009. Astrocytes are a major target in thiamine deficiency and Wernicke's encephalopathy. *Neurochem. Int.* 55, 129–135.
- Hedreen, J.C., Peyser, C.E., Folstein, S.E., Ross, C.A., 1991. Neuronal loss in layers V and VI of cerebral cortex in Huntington's disease. *Neurosci. Lett.* 133, 257–261.
- Heneka, M.T., Sastre, M., Dumitrescu-Ozimek, L., Dewachter, I., Walter, J., Klockgether, T., Van Leuven, F., 2005. Focal glial activation coincides with increased BACE1 activation and precedes amyloid plaque deposition in APP[V717I] transgenic mice. *J. Neuroinflamm.* 2, 22.
- Herman, M., Ciancanelli, M., Ou, Y.H., Lorenzo, L., Klaudel-Dreszler, M., Pauwels, E., Sancho-Shimizu, V., Perez de Diego, R., Abhyankar, A., Israelsson, E., Guo, Y., Cardon, A., Rozenberg, F., Lebon, P., Tardieu, M., Heropolitanska-Pliszka, E., Chaussabel, D., White, M.A., Abel, L., Zhang, S.Y., Casanova, J.L., 2012. Heterozygous TBK1 mutations impair TLR3 immunity and underlie herpes simplex encephalitis of childhood. *J. Exp. Med.* 209, 1567–1582.
- Heuser, K., Nagelhus, E.A., Tauboll, E., Indahl, U., Berg, P.R., Lien, S., Nakken, S., Gjerstad, L., Ottersen, O.P., 2010. Variants of the genes encoding AQP4 and K_v4.1 are associated with subgroups of patients with temporal lobe epilepsy. *Epilepsia Res.* 88, 55–64.
- Hildebrand, J., Lecaille, C., Perennes, J., Delattre, J.Y., 2005. Epileptic seizures during follow-up of patients treated for primary brain tumors. *Neurology* 65, 212–215.
- Hinterkeuser, S., Schroder, W., Hager, G., Seifert, G., Blumcke, I., Elger, C.E., Schramm, J., Steinhauser, C., 2000. Astrocytes in the hippocampus of patients with temporal lobe epilepsy display changes in potassium conductances. *Eur. J. Neurosci.* 12, 2087–2096.
- Holtze, M., Saetre, P., Engberg, G., Schwieler, L., Werge, T., Andreassen, O.A., Hall, H., Terenius, A., Agartz, I., Jonsson, E.G., Schalling, M., Erhardt, S., 2012. Kynurenine 3-monooxygenase polymorphisms: relevance for kynurenic acid synthesis in patients with schizophrenia and healthy controls. *J. Psychiatry Neurosci.* 37, 53–57.
- Hsiao, H.Y., Chen, Y.C., Huang, C.H., Chen, C.C., Hsu, Y.H., Chen, H.M., Chiu, F.L., Kuo, H.C., Chang, C., Chern, Y., 2015. Aberrant astrocytes impair vascular reactivity in Huntington disease. *Ann. Neurol.* 78, 178–192.
- Huang, C., Han, X., Li, X., Lam, E., Peng, W., Lou, N., Torres, A., Yang, M., Garre, J.M., Tian, G.F., Bennett, M.V., Nedergaard, M., Takano, T., 2012. Critical role of connexin 43 in secondary expansion of traumatic spinal cord injury. *J. Neurosci.* 32, 3333–3338.
- Iadecola, C., Nedergaard, M., 2007. Glial regulation of the cerebral microvasculature. *Nat. Neurosci.* 10, 1369–1376.
- Iovino, F., Orihuela, C.J., Moorlag, H.E., Molema, G., Bijlsma, J.J., 2013. Interactions between blood-borne *Streptococcus pneumoniae* and the blood-brain barrier preceding meningitis. *PLOS ONE* 8, e68408.
- Iuvone, T., Esposito, G., De Filippis, D., Bisogno, T., Petrosino, S., Scuderi, C., Di Marzo, V., Steardo, L., Endocannabinoid Research, G., 2007. Cannabinoid CB1 receptor stimulation affords neuroprotection in MPTP-induced neurotoxicity by attenuating S100B up-regulation *in vitro*. *J. Mol. Med. (Berl.)* 85, 1379–1392.
- Jacobs, S., Doering, L.C., 2010. Astrocytes prevent abnormal neuronal development in the fragile X mouse. *J. Neurosci.* 30, 4508–4514.
- Jacobs, S., Nathwani, M., Doering, L.C., 2010. Fragile X astrocytes induce developmental delays in dendrite maturation and synaptic protein expression. *BMC Neurosci.* 11, 132.
- Joseph, S.B., Arrildt, K.T., Sturdevant, C.B., Swanstrom, R., 2015. HIV-1 target cells in the CNS. *J. Neurovirol.* 21, 276–289.
- Jovcevska, I., Kocever, N., Komeel, R., 2013. Glioma and glioblastoma – how much do we (not) know? *Mol. Clin. Oncol.* 1, 935–941.
- Kabashi, E., Valdmanis, P.N., Dion, P., Spiegelman, D., McConkey, B.J., Vande Velde, C., Bouchard, J.P., Lacomblez, L., Pochigaeva, K., Salachas, F., Pradat, P.F., Camu, W., Meininger, V., Dupre, N., Rouleau, G.A., 2008. TARDBP mutations in individuals with sporadic and familial amyotrophic lateral sclerosis. *Nat. Genet.* 40, 572–574.
- Kanamaru, K., Kubota, J., Sekiya, H., Hirose, K., Okubo, Y., Iino, M., 2013. Calcium-dependent N-cadherin up-regulation mediates reactive astrogliosis and neuroprotection after brain injury. *Proc. Natl. Acad. Sci. U. S. A.* 110, 11612–11617.
- Karlsen, A.S., Pakkenberg, B., 2011. Total numbers of neurons and glial cells in cortex and basal ganglia of aged brains with Down syndrome – a stereological study. *Cereb. Cortex* 21, 2519–2524.
- Karlsson, R.M., Tanaka, K., Heilig, M., Holmes, A., 2008. Loss of glial glutamate and aspartate transporter (excitatory amino acid transporter 1) causes locomotor hyperactivity and exaggerated responses to psychotomimetics: rescue by haloperidol and metabotropic glutamate 2/3 agonist. *Biol. Psychiatry* 64, 810–814.
- Karlsson, R.M., Tanaka, K., Saksida, L.M., Bussey, T.J., Heilig, M., Holmes, A., 2009. Assessment of glutamate transporter GLAST (EAAT1)-deficient mice for phenotypes relevant to the negative and executive/cognitive symptoms of schizophrenia. *Neuropsychopharmacology* 34, 1578–1589.
- Kelamangalath, L., Wagner, J.J., 2010. D-Serine treatment reduces cocaine-primed reinstatement in rats following extended access to cocaine self-administration. *Neuroscience* 169, 1127–1135.
- Kelly, T., Kafitz, K.W., Roderigo, C., Rose, C.R., 2009. Ammonium-evoked alterations in intracellular sodium and pH reduce glial glutamate transport activity. *Glia* 57, 921–934.
- Kelly, T., Rose, C.R., 2010. Ammonium influx pathways into astrocytes and neurones of hippocampal slices. *J. Neurochem.* 115, 1123–1136.

- Kettenmann, H., Hanisch, U.K., Noda, M., Verkhratsky, A., 2011. Physiology of microglia. *Physiol. Rev.* 91, 461–553.
- Kettenmann, H., Ransom, B.R. (Eds.), 2013. *Neuroglia*. Oxford University Press, Oxford.
- Kidd, S.A., Lachiewicz, A., Barbouth, D., Blitz, R.K., Delahunty, C., McBrien, D., Visoitsak, J., Berry-Kravis, E., 2014. Fragile X syndrome: a review of associated medical problems. *Pediatrics* 134, 995–1005.
- Kimura, N., Okabayashi, S., Ono, F., 2014. Dynein dysfunction disrupts beta-amyloid clearance in astrocytes through endocytic disturbances. *Neuroreport* 25, 514–520.
- Kirischuk, S., Parpura, V., Verkhratsky, A., 2012. Sodium dynamics: another key to astroglial excitability? *Trends Neurosci.* 35, 497–506.
- Knackstedt, L.A., Melendez, R.I., Kalivas, P.W., 2010. Ceftriaxone restores glutamate homeostasis and prevents relapse to cocaine seeking. *Biol. Psychiatry* 67, 81–84.
- Koss, W.A., Sadowski, R.N., Sherrill, L.K., Gulley, J.M., Juraska, J.M., 2012. Effects of ethanol during adolescence on the number of neurons and glia in the medial prefrontal cortex and basolateral amygdala of adult male and female rats. *Brain Res.* 1466, 24–32.
- Kraepelin, E., 1910. *Psychiatrie: Ein Lehrbuch fuer Studierende und Arzte*. Johann Ambrosius Barth, Leipzig.
- Kraft, A.W., Hu, X., Yoon, H., Yan, P., Xiao, Q., Wang, Y., Gil, S.C., Brown, J., Wilhelmsson, U., Restivo, J.L., Cirrito, J.R., Holtzman, D.M., Kim, J., Pekny, M., Lee, J.M., 2013. Attenuating astrocyte activation accelerates plaque pathogenesis in APP/PS1 mice. *FASEB J.* 27, 187–198.
- Krencik, R., Hokanson, K.C., Narayan, A.R., Dvornik, J., Rooney, G.E., Rauen, K.A., Weiss, L.A., Rowitch, D.H., Ullian, E.M., 2015. Dysregulation of astrocyte extracellular signaling in Costello syndrome. *Sci. Transl. Med.* 7, 286ra266.
- Kuchibhotla, K.V., Lattarulo, C.R., Hyman, B.T., Bacskaï, B.J., 2009. Synchronous hyperactivity and intercellular calcium waves in astrocytes in Alzheimer mice. *Science* 323, 1211–1215.
- Kulijewicz-Nawrot, M., Verkhratsky, A., Chvatal, A., Sykova, E., Rodriguez, J.J., 2012. Astrocyte cytoskeletal atrophy in the medial prefrontal cortex of a triple transgenic mouse model of Alzheimer's disease. *J. Anat.* 221, 252–262.
- Kurzweil, D., Herrlinger, U., Simon, M., 2010. Seizures in patients with low-grade gliomas – incidence, pathogenesis, surgical management, and pharmacotherapy. *Adv. Tech. Stand. Neurosurg.* 35, 81–111.
- Kwiatkowski Jr., T.J., Bosco, D.A., Leclerc, A.L., Tamrazian, E., Vandenberg, C.R., Russ, C., Davis, A., Gilchrist, J., Kasarskis, E.J., Munsat, T., Valdmanis, P., Rouleau, G.A., Hosler, B.A., Cortelli, P., de Jong, P.J., Yoshinaga, Y., Haines, J.L., Pericak-Vance, M.A., Yan, J., Ticozzi, N., Siddique, T., McKenna-Yasek, D., Sapp, P.C., Horvitz, H.R., Landers, J.E., Brown Jr., R.H., 2009. Mutations in the FUS/TLS gene on chromosome 16 cause familial amyotrophic lateral sclerosis. *Science* 323, 1205–1208.
- Labrie, V., Fukumura, R., Rastogi, A., Fick, L.J., Wang, W., Boutros, P.C., Kennedy, J.L., Semeralul, M.O., Lee, F.H., Baker, G.B., Belsham, D.D., Barger, S.W., Gondo, Y., Wong, A.H., Roder, J.C., 2009. Serine racemase is associated with schizophrenia susceptibility in humans and in a mouse model. *Hum. Mol. Genet.* 18, 3227–3243.
- Laruelle, M., 2014. Schizophrenia: from dopaminergic to glutamatergic interventions. *Curr. Opin. Pharmacol.* 14, 97–102.
- Lauritzen, M., Dreier, J.P., Fabricius, M., Hartings, J.A., Graf, R., Strong, A.J., 2011. Clinical relevance of cortical spreading depression in neurological disorders: migraine, malignant stroke, subarachnoid and intracranial hemorrhage, and traumatic brain injury. *J. Cereb. Blood Flow Metab.* 31, 17–35.
- Lee, H.J., Suk, J.E., Patrick, C., Bae, E.J., Cho, J.H., Rho, S., Hwang, D., Masliah, E., Lee, S.J., 2010. Direct transfer of alpha-synuclein from neuron to astroglia causes inflammatory responses in synucleinopathies. *J. Biol. Chem.* 285, 9262–9272.
- Lee, J., Borboa, A.K., Baird, A., Eliceiri, B.P., 2011. Non-invasive quantification of brain tumor-induced astrogliosis. *BMC Neurosci.* 12, 9.
- Lee, W., Reyes, R.C., Gottipati, M.K., Lewis, K., Lesort, M., Parpura, V., Gray, M., 2013. Enhanced Ca²⁺-dependent glutamate release from astrocytes of the BACHD Huntington's disease mouse model. *Neurobiol. Dis.* 58, 192–199.
- Lepore, A.C., Rauck, B., Dejea, C., Pardo, A.C., Rao, M.S., Rothstein, J.D., Maragakis, N.J., 2008. Focal transplantation-based astrocyte replacement is neuroprotective in a model of motor neuron disease. *Nat. Neurosci.* 11, 1294–1301.
- Li, T., Lan, J.Q., Boison, D., 2008. Uncoupling of astrogliosis from epileptogenesis in adenosine kinase (ADK) transgenic mice. *Neuron Glia Biol.* 4, 91–99.
- Li, T., Lytle, N., Lan, J.Q., Sandau, U.S., Boison, D., 2012. Local disruption of glial adenosine homeostasis in mice associates with focal electrographic seizures: a first step in epileptogenesis? *Glia* 60, 83–95.
- Li, T., Quan, L., Fredholm, B.B., Simon, R.P., Boison, D., 2007. Adenosine dysfunction in astrogliosis: cause for seizure generation? *Neuron Glia Biol.* 3, 353–366.
- Li, Y., Sattler, R., Yang, E.J., Nunes, A., Ayukawa, Y., Akhtar, S., Ji, G., Zhang, P.W., Rothstein, J.D., 2011. Harmine, a natural beta-carboline alkaloid, upregulates astroglial glutamate transporter expression. *Neuropharmacology* 60, 1168–1175.
- Liang, C., Du, T., Zhou, J., Verkhratsky, A., Peng, L., 2014. Ammonium increases Ca²⁺ signalling and up-regulates expression of TRPC1 gene in astrocytes in primary cultures and in the *in vivo* brain. *Neurochem. Res.* 39, 2127–2135.
- Liang, W.S., Reiman, E.M., Valla, J., Duncley, T., Beach, T.G., Grover, A., Niedzielko, T.L., Schneider, L.E., Mastroeni, D., Caselli, R., Kukull, W., Morris, J.C., Hulette, C.M., Schmechel, D., Rogers, J., Stephan, D.A., 2008. Alzheimer's disease is associated with reduced expression of energy metabolism genes in posterior cingulate neurons. *Proc. Natl. Acad. Sci. U. S. A.* 105, 4441–4446.
- Lim, D., Ronco, V., Grolla, A.A., Verkhratsky, A., Genazzani, A.A., 2014. Glial calcium signalling in Alzheimer's disease. *Rev. Physiol. Biochem. Pharmacol.* 167, 45–65.
- Liu, X., Chauhan, V.S., Young, A.B., Marriott, I., 2010. NOD2 mediates inflammatory responses of primary murine glia to *Streptococcus pneumoniae*. *Glia* 58, 839–847.
- Liu, Z., Song, D., Yan, E., Verkhratsky, A., Peng, L., 2015. Chronic treatment with anti-bipolar drugs suppresses glutamate release from astroglial cultures. *Amino Acids* 47, 1045–1051.
- Lothman, E.W., Somjen, G.G., 1976. Functions of primary afferents and responses of extracellular K⁺ during spinal epileptiform seizures. *Electroencephalogr. Clin. Neurophysiol.* 41, 253–267.
- Lynam, L.M., Lyons, M.K., Drazkowski, J.F., Sirven, J.I., Noe, K.H., Zimmerman, R.S., Wilkens, J.A., 2007. Frequency of seizures in patients with newly diagnosed brain tumors: a retrospective review. *Clin. Neurosci. Neurosurg.* 109, 634–638.
- Ma, T.M., Abazy, S., Abazy, B., Nomura, J., Yang, C., Seshadri, S., Sawa, A., Snyder, S.H., Pletnikov, M.V., 2013. Pathogenic disruption of DISC1-serine racemase binding elicits schizophrenia-like behavior via D-serine depletion. *Mol. Psychiatry* 18, 557–567.
- Mahy, N., Andres, N., Andrade, C., Saura, J., 2000. Age-related changes of MAO-A and -B distribution in human and mouse brain. *Neurobiology (Bp)* 8, 47–54.
- Makar, T.K., Nedergaard, M., Preuss, A., Gelbard, A.S., Perumal, A.S., Cooper, A.J., 1994. Vitamin E, ascorbate, glutathione, glutathione disulfide, and enzymes of glutathione metabolism in cultures of chick astrocytes and neurons: evidence that astrocytes play an important role in antioxidative processes in the brain. *J. Neurochem.* 62, 45–53.
- Malarkey, E.B., Parpura, V., 2008. Mechanisms of glutamate release from astrocytes. *Neurochem. Int.* 52, 142–154.
- Mallajosyula, J.K., Kaur, D., Chinta, S.J., Rajagopalan, S., Rane, A., Nicholls, D.G., Di Monte, D.A., MacArthur, H., Andersen, J.K., 2008. MAO-B elevation in mouse brain astrocytes results in Parkinson's pathology. *PLoS ONE* 3, e1616.
- Mandel, S., Grunblatt, E., Riederer, P., Youdim, M.B., 2003. Genes and oxidative stress in parkinsonism: cDNA microarray studies. *Adv. Neurol.* 91, 123–132.
- Marchetto, M.C., Muotri, A.R., Mu, Y., Smith, A.M., Cezar, G.G., Gage, F.H., 2008. Non-cell-autonomous effect of human SOD1 G37R astrocytes on motor neurons derived from human embryonic stem cells. *Cell Stem Cell* 3, 649–657.
- Marcus, H.J., Carpenter, K.L., Price, S.J., Hutchinson, P.J., 2010. In vivo assessment of high-grade glioma biochemistry using microdialysis: a study of energy-related molecules, growth factors and cytokines. *J. Neurooncol.* 97, 11–23.
- Maruyama, H., Morino, H., Ito, H., Izumi, Y., Kato, H., Watanabe, Y., Kinoshita, Y., Kamada, M., Nodera, H., Suzuki, H., Komure, O., Matsuura, S., Kobatake, K., Morimoto, N., Abe, K., Suzuki, N., Aoki, M., Kawata, A., Hirai, T., Kato, T., Ogasawara, K., Hirano, A., Takumi, T., Kusaka, H., Hagiwara, K., Kaji, R., Kawakami, H., 2010. Mutations of optineurin in amyotrophic lateral sclerosis. *Nature* 465, 223–226.
- Masino, S.A., Li, T., Theofilas, P., Sandau, U.S., Ruskin, D.N., Fredholm, B.B., Geiger, J.D., Aronica, E., Boison, D., 2011. A ketogenic diet suppresses seizures in mice through adenosine A(1) receptors. *J. Clin. Invest.* 121, 2679–2683.
- Matos, M., Augusto, E., Oliveira, C.R., Agostinho, P., 2008. Amyloid-beta peptide decreases glutamate uptake in cultured astrocytes: involvement of oxidative stress and mitogen-activated protein kinase cascades. *Neuroscience* 156, 898–910.
- Matyash, V., Kettenmann, H., 2010. Heterogeneity in astrocyte morphology and physiology. *Brain Res. Rev.* 63, 2–10.
- McGeer, P.L., McGeer, E.G., 2008. Glial reactions in Parkinson's disease. *Mov. Disord.* 23, 474–483.
- McGinnis, W.R., 2004. Oxidative stress in autism. *Altern. Ther. Health Med.* 10, 22–36, quiz 37, 92.
- Meador-Woodruff, J.H., Clinton, S.M., Beneyto, M., McCullumsmith, R.E., 2003. Molecular abnormalities of the glutamate synapse in the thalamus in schizophrenia. *Ann. N. Y. Acad. Sci.* 1003, 75–93.
- Meda, L., Baron, P., Scarlato, G., 2001. Glial activation in Alzheimer's disease: the role of Abeta and its associated proteins. *Neurobiol. Aging* 22, 885–893.
- Meredith, G.E., Sonsalla, P.K., Chesselet, M.F., 2008. Animal models of Parkinson's disease progression. *Acta Neuropathol.* 115, 385–398.
- Messing, A., Brenner, M., Feany, M.B., Nedergaard, M., Goldman, J.E., 2012. Alexander disease. *J. Neurosci.* 32, 5017–5023.
- Miguel-Hidalgo, J., Shoyama, Y., Wanzo, V., 2009. Infusion of gliotoxins or a gap junction blocker in the prefrontal cortex increases alcohol preference in Wistar rats. *J. Psychopharmacol.* 23, 550–557.
- Miguel-Hidalgo, J.J., 2005. Lower packing density of glial fibrillary acidic protein-immunoreactive astrocytes in the prefrontal cortex of alcohol-naïve and alcohol-drinking alcohol-preferring rats as compared with alcohol-nonpreferring and Wistar rats. *Alcohol. Clin. Exp. Res.* 29, 766–772.
- Miguel-Hidalgo, J.J., 2009. The role of glial cells in drug abuse. *Curr. Drug Abuse Rev.* 2, 76–82.
- Miguel-Hidalgo, J.J., Overholser, J.C., Meltzer, H.Y., Stockmeier, C.A., Rajkowska, G., 2006. Reduced glial and neuronal packing density in the orbitofrontal cortex in alcohol dependence and its relationship with suicide and duration of alcohol dependence. *Alcohol. Clin. Exp. Res.* 30, 1845–1855.
- Miguel-Hidalgo, J.J., Wei, J., Andrew, M., Overholser, J.C., Jurjus, G., Stockmeier, C.A., Rajkowska, G., 2002. Glia pathology in the prefrontal cortex in alcohol dependence with and without depressive symptoms. *Biol. Psychiatry* 52, 1121–1133.
- Mirza, B., Hadberg, H., Thomsen, P., Moos, T., 2000. The absence of reactive astrocytosis is indicative of a unique inflammatory process in Parkinson's disease. *Neuroscience* 95, 425–432.
- Molsa, P.K., Marttila, R.J., Rinne, U.K., 1986. Survival and cause of death in Alzheimer's disease and multi-infarct dementia. *Acta Neurol. Scand.* 74, 103–107.

- Montana, V., Verkhratsky, A., Parpura, V., 2014. Pathological role for exocytotic glutamate release from astrocytes in hepatic encephalopathy. *Curr. Neuropharmacol.* 12, 324–333.
- Moody, W.J., Futamachi, K.J., Prince, D.A., 1974. Extracellular potassium activity during epileptogenesis. *Exp. Neurol.* 42, 248–263.
- Moon, J.H., Kwon, S., Jun, E.K., Kim, A., Whang, K.Y., Kim, H., Oh, S., Yoon, B.S., You, S., 2011. Nanog-induced dedifferentiation of p53-deficient mouse astrocytes into brain cancer stem-like cells. *Biochem. Biophys. Res. Commun.* 412, 175–181.
- Mosconi, L., Pupi, A., De Leon, M.J., 2008. Brain glucose hypometabolism and oxidative stress in preclinical Alzheimer's disease. *Ann. N. Y. Acad. Sci.* 1147, 180–195.
- Moussawi, K., Riegel, A., Nair, S., Kalivas, P.W., 2011. Extracellular glutamate: functional compartments operate in different concentration ranges. *Front. Syst. Neurosci.* 5, 94.
- Mrak, R.E., Griffin, W.S., 2005. Glia and their cytokines in progression of neurodegeneration. *Neurobiol. Aging* 26, 349–354.
- Nagai, M., Re, D.B., Nagata, T., Chalazonitis, A., Jessell, T.M., Wichterle, H., Przedborski, S., 2007. Astrocytes expressing ALS-linked mutated SOD1 release factors selectively toxic to motor neurons. *Nat. Neurosci.* 10, 615–622.
- Narasipura, S.D., Kim, S., Al-Harhi, L., 2014. Epigenetic regulation of HIV-1 latency in astrocytes. *J. Virol.* 88, 3031–3038.
- Nedergaard, M., 1996. Spreading depression as a contributor to ischemic brain damage. *Adv. Neurol.* 71, 75–83, discussion 83–74.
- Nedergaard, M., Ransom, B., Goldman, S.A., 2003. New roles for astrocytes: redefining the functional architecture of the brain. *Trends Neurosci.* 26, 523–530.
- Nedergaard, M., Rodriguez, J.J., Verkhratsky, A., 2010. Glial calcium and diseases of the nervous system. *Cell Calcium* 47, 140–149.
- Norenberg, M.D., 1987. The role of astrocytes in hepatic encephalopathy. *Neurochem. Pathol.* 6, 13–33.
- Obara-Michlewska, M., Ruszkiewicz, J., Zielinska, M., Verkhratsky, A., Albrecht, J., 2014. Astroglial NMDA receptors inhibit expression of K4.1 channels in glutamate-overexposed astrocytes in vitro and in the brain of rats with acute liver failure. *Neurochem. Int.* 88, 20–25.
- Oberheim, N.A., Goldman, S.A., Nedergaard, M., 2012. Heterogeneity of astrocytic form and function. *Methods Mol. Biol.* 814, 23–45.
- Oberndorfer, S., Schmal, T., Lahrmann, H., Urbanits, S., Lindner, K., Grisold, W., 2002. The frequency of seizures in patients with primary brain tumors or cerebral metastases. An evaluation from the Ludwig Boltzmann Institute of Neuro-Oncology and the Department of Neurology, Kaiser Franz Josef Hospital, Vienna. *Wien. Klin. Wochenschr.* 114, 911–916.
- Oddo, S., Caccamo, A., Shepherd, J.D., Murphy, M.P., Golde, T.E., Kaye, R., Metherate, R., Mattson, M.P., Akbari, Y., LaFerla, F.M., 2003. Triple-transgenic model of Alzheimer's disease with plaques and tangles: intracellular Ab and synaptic dysfunction. *Neuron* 39, 409–421.
- Oehmichen, M., Meissner, C., Reiter, A., Birkholz, M., 1996. Neuropathology in non-human immunodeficiency virus-infected drug addicts: hypoxic brain damage after chronic intravenous drug abuse. *Acta Neuropathol.* 91, 642–646.
- Ohnuma, T., Tessler, S., Arai, H., Faull, R.L., McKenna, P.J., Emson, P.C., 2000. Gene expression of metabotropic glutamate receptor 5 and excitatory amino acid transporter 2 in the schizophrenic hippocampus. *Brain Res. Mol. Brain Res.* 85, 24–31.
- Olabarria, M., Noristani, H.N., Verkhratsky, A., Rodriguez, J.J., 2010. Concomitant astroglial atrophy and astrogliosis in a triple transgenic animal model of Alzheimer's disease. *Glia* 58, 831–838.
- Olabarria, M., Noristani, H.N., Verkhratsky, A., Rodriguez, J.J., 2011. Age-dependent decrease in glutamine synthetase expression in the hippocampal astroglia of the triple transgenic Alzheimer's disease mouse model: mechanism for deficient glutamatergic transmission? *Mol. Neurodegener.* 6, 55.
- Ongur, D., Drevets, W.C., Price, J.L., 1998. Glial reduction in the subgenual prefrontal cortex in mood disorders. *Proc. Natl. Acad. Sci. U. S. A.* 95, 13290–13295.
- Orellana, J.A., Saez, J.C., Bennett, M.V., Berman, J.W., Morgello, S., Eugenin, E.A., 2014. HIV increases the release of dickkopf-1 protein from human astrocytes by a Cx43 hemichannel-dependent mechanism. *J. Neurochem.* 128, 752–763.
- Ortinski, P.I., Dong, J., Mungenast, A., Yue, C., Takano, H., Watson, D.J., Haydon, P.G., Coulter, D.A., 2010. Selective induction of astrocytic gliosis generates deficits in neuronal inhibition. *Nat. Neurosci.* 13, 584–591.
- Papadeas, S.T., Kraig, S.E., O'Banion, C., Lepore, A.C., Maragakis, N.J., 2011. Astrocytes carrying the superoxide dismutase 1 (SOD1G93A) mutation induce wild-type motor neuron degeneration in vivo. *Proc. Natl. Acad. Sci. U. S. A.* 108, 17803–17808.
- Park, D.M., Rich, J.N., 2009. Biology of glioma cancer stem cells. *Mol. Cells* 28, 7–12.
- Parpura-Gill, A., Beitz, D., Uemura, E., 1997. The inhibitory effects of beta-amyloid on glutamate and glucose uptakes by cultured astrocytes. *Brain Res.* 754, 65–71.
- Parpura, V., Grubisic, V., Verkhratsky, A., 2011. Ca²⁺ sources for the exocytotic release of glutamate from astrocytes. *Biochim. Biophys. Acta* 1813, 984–991.
- Parpura, V., Heneka, M.T., Montana, V., Olie, S.H., Schousboe, A., Haydon, P.G., Stout Jr., R.F., Spray, D.C., Reichenbach, A., Pannicke, T., Pekny, M., Pekna, M., Zorec, R., Verkhratsky, A., 2012. Glial cells in (patho)physiology. *J. Neurochem.* 121, 4–27.
- Parpura, V., Verkhratsky, A., 2012a. The astrocyte excitability brief: from receptors to gliotransmission. *Neurochem. Int.* 61, 610–621.
- Parpura, V., Verkhratsky, A., 2012b. Homeostatic function of astrocytes: Ca²⁺ and Na⁺ signalling. *Transl. Neurosci.* 3, 334–344.
- Parpura, V., Verkhratsky, A., 2013. Astroglial amino acid-based transmitter receptors. *Amino Acids* 44, 1151–1158.
- Pekny, M., Wilhelmsson, U., Pekna, M., 2014. The dual role of astrocyte activation and reactive gliosis. *Neurosci. Lett.* 565C, 30–38.
- Perides, G., Tanner-Brown, L.M., Eskildsen, M.A., Klempner, M.S., 1999. *Borrelia burgdorferi* induces matrix metalloproteinases by neural cultures. *J. Neurosci. Res.* 58, 779–790.
- Phatnani, H.P., Guarnieri, P., Friedman, B.A., Carrasco, M.A., Muratet, M., O'Keefe, S., Nwakeze, C., Pauli-Behn, F., Newberry, K.M., Meadows, S.K., Tapia, J.C., Myers, R.M., Maniatis, T., 2013. Intricate interplay between astrocytes and motor neurons in ALS. *Proc. Natl. Acad. Sci. U. S. A.* 110, E756–E765.
- Popoli, M., Yan, Z., McEwen, B.S., Sanacora, G., 2012. The stressed synapse: the impact of stress and glucocorticoids on glutamate transmission. *Nat. Rev. Neurosci.* 13, 22–37.
- Proschel, C., Stripay, J.L., Shih, C.H., Munger, J.C., Noble, M.D., 2014. Delayed transplantation of precursor cell-derived astrocytes provides multiple benefits in a rat model of Parkinsons. *EMBO Mol. Med.* 6, 504–518.
- Prust, M., Wang, J., Morizono, H., Messing, A., Brenner, M., Gordon, E., Hartka, T., Sokohl, A., Schiffmann, R., Gordish-Dressman, H., Albin, R., Artimino, H., Brockman, K., Dinopoulos, A., Dotti, M.T., Fain, D., Fernandez, R., Ferreira, J., Fleming, J., Gill, D., Griebel, M., Heilstedt, H., Kaplan, P., Lewis, D., Nakagawa, M., Pedersen, R., Reddy, A., Sawaishi, Y., Schneider, M., Sherr, E., Takiyama, Y., Wakabayashi, K., Gorospe, J.R., Vanderver, A., 2011. GFAP mutations, age at onset, and clinical subtypes in Alexander disease. *Neurology* 77, 1287–1294.
- Qrunfluh, A.M., Alazizi, A., Sari, Y., 2013. Ceftriaxone, a beta-lactam antibiotic, attenuates relapse-like ethanol-drinking behavior in alcohol-preferring rats. *J. Psychopharmacol.* 27, 541–549.
- Quaak, I., Brouns, M.R., Van de Bor, M., 2013. The dynamics of autism spectrum disorders: how neurotoxic compounds and neurotransmitters interact. *Int. J. Environ. Res. Public Health* 10, 3384–3408.
- Rajkowska, G., Miguel-Hidalgo, J.J., Makkos, Z., Meltzer, H., Overholser, J., Stockmeier, C., 2002. Layer-specific reductions in GFAP-reactive astroglia in the dorsolateral prefrontal cortex in schizophrenia. *Schizophr. Res.* 57, 127–138.
- Rajkowska, G., Miguel-Hidalgo, J.J., Wei, J., Dille, G., Pittman, S.D., Meltzer, H.Y., Overholser, J.C., Roth, B.L., Stockmeier, C.A., 1999. Morphometric evidence for neuronal and glial prefrontal cell pathology in major depression. *Biol. Psychiatry* 45, 1085–1098.
- Rajkowska, G., Stockmeier, C.A., 2013. Astrocyte pathology in major depressive disorder: insights from human postmortem brain tissue. *Curr. Drug Targets* 14, 1225–1236.
- Rangroo Thrane, V., Thrane, A.S., Wang, F., Cotrina, M.L., Smith, N.A., Chen, M., Xu, Q., Kang, N., Fujita, T., Nagelhus, E.A., Nedergaard, M., 2013. Ammonia triggers neuronal disinhibition and seizures by impairing astrocyte potassium buffering. *Nat. Med.* 19, 1643–1648.
- Rao, V.L., Baskaya, M.K., Dogan, A., Rothstein, J.D., Dempsey, R.J., 1998. Traumatic brain injury down-regulates glial glutamate transporter (GLT-1 and GLAST) proteins in rat brain. *J. Neurochem.* 70, 2020–2027.
- Rao, V.L., Dogan, A., Todd, K.G., Bowen, K.K., Kim, B.T., Rothstein, J.D., Dempsey, R.J., 2001. Antisense knockdown of the glial glutamate transporter GLT-1, but not the neuronal glutamate transporter EAAC1, exacerbates transient focal cerebral ischemia-induced neuronal damage in rat brain. *J. Neurosci.* 21, 1876–1883.
- Raore, B., Schniederjan, M., Prabhu, R., Brat, D.J., Shu, H.K., Olson, J.J., 2011. Metastasis infiltration: an investigation of the postoperative brain-tumor interface. *Int. J. Radiat. Oncol. Biol. Phys.* 81, 1075–1080.
- Rappold, P.M., Tieu, K., 2010. Astrocytes and therapeutics for Parkinson's disease. *Neurotherapeutics* 7, 413–423.
- Reinert, L.S., Harder, L., Holm, C.K., Iversen, M.B., Horan, K.A., Dagnaes-Hansen, F., Ulhoi, B.P., Holm, T.H., Mogensen, T.H., Owens, T., Nyengaard, J.R., Thomsen, A.R., Paludan, S.R., 2012. TLR3 deficiency renders astrocytes permissive to herpes simplex virus infection and facilitates establishment of CNS infection in mice. *J. Clin. Invest.* 122, 1368–1376.
- Reissner, K.J., Kalivas, P.W., 2010. Using glutamate homeostasis as a target for treating addictive disorders. *Behav. Pharmacol.* 21, 514–522.
- Reissner, K.J., Kalivas, P.W., 2014. Emerging roles for glial pathology in addiction. In: Parpura, V., Verkhratsky, A. (Eds.), *Pathological Potential of Neuroglia: Possible New Targets for Medical Intervention*. Springer, New York/Heidelberg/Dordrecht/London, pp. 397–418.
- Ren, J., Song, D., Bai, Q., Verkhratsky, A., Peng, L., 2015. Fluoxetine induces alkalization of astroglial cytosol through stimulation of sodium-hydrogen exchanger 1: dissection of intracellular signaling pathways. *Front. Cell. Neurosci.* 9, 61.
- Renton, A.E., Majounie, E., Waite, A., Simon-Sanchez, J., Rollinson, S., Gibbs, J.R., Schymick, J.C., Laaksovirta, H., van Swieten, J.C., Myllykangas, L., Kalimo, H., Paetau, A., Abramzon, Y., Remes, A.M., Kaganovich, A., Scholz, S.W., Duckworth, J., Ding, J., Harmer, D.W., Hernandez, D.G., Johnson, J.O., Mok, K., Ryten, M., Trabzuni, D., Guerreiro, R.J., Orrell, R.W., Neal, J., Murray, A., Pearson, J., Jansen, I.E., Sondervan, D., Seelaar, H., Blake, D., Young, K., Halliwell, N., Callister, J.B., Toulson, G., Richardson, A., Gerhard, A., Snowden, J., Mann, D., Neary, D., Nalls, M.A., Peuralinna, T., Jansson, L., Isoviita, V.M., Kaivorinne, A.L., Holtta-Vuori, M., Ikonen, E., Sulkava, R., Benatar, M., Wu, J., Chio, A., Restagno, G., Borghero, G., Sabatelli, M., Consortium, I., Heckerman, D., Rogava, E., Zimman, L., Rothstein, J.D., Sendtner, M., Drepper, C., Eichler, E.E., Alkan, C., Abdullaev, Z., Pak, S.D., Dutra, A., Pak, E., Hardy, J., Singleton, A., Williams, N.M., Heutink, P., Pickering-Brown, S., Morris, H.R., Tienari, P.J., Traynor, B.J., 2011. A hexanucleotide repeat expansion in C9ORF72 is the cause of chromosome 9p21-linked ALS-FTD. *Neuron* 72, 257–268.
- Rintala, J., Jaatinen, P., Kiianmaa, K., Riikonen, J., Kempainen, O., Sarviharju, M., Hervonen, A., 2001. Dose-dependent decrease in glial fibrillary acidic protein-immunoreactivity in rat cerebellum after lifelong ethanol consumption. *Alcohol* 23, 1–8.

- Rodriguez-Arellano, J.J., Parpura, V., Zorec, R., Verkhratsky, A., 2015. Astrocytes in physiological aging and Alzheimer's disease. *Neuroscience*, <http://dx.doi.org/10.1016/j.neuroscience.2015.01.007>.
- Rodriguez, J.J., Olabarria, M., Chvatal, A., Verkhratsky, A., 2009. Astroglia in dementia and Alzheimer's disease. *Cell Death Differ.* 16, 378–385.
- Rodriguez, J.J., Terzieva, S., Olabarria, M., Lanza, R.G., Verkhratsky, A., 2013. Enriched environment and physical activity reverse astroglial degeneration in the hippocampus of AD transgenic mice. *Cell Death Dis.* 4, e678.
- Rojas, D.C., 2014. The role of glutamate and its receptors in autism and the use of glutamate receptor antagonists in treatment. *J. Neural Transm.* 121, 891–905.
- Rose, C.F., Verkhratsky, A., Parpura, V., 2013. Astrocyte glutamine synthetase: pivotal in health and disease. *Biochem. Soc. Trans.* 41, 1518–1524.
- Rose, C.R., Karus, C., 2013. Two sides of the same coin: sodium homeostasis and signaling in astrocytes under physiological and pathophysiological conditions. *Glia* 61, 1191–1205.
- Rosen, D.R., Siddique, T., Patterson, D., Figlewicz, D.A., Sapp, P., Hentati, A., Donaldson, D., Goto, J., O'Regan, J.P., Deng, H.X., et al., 1993. Mutations in Cu/Zn superoxide dismutase gene are associated with familial amyotrophic lateral sclerosis. *Nature* 362, 59–62.
- Roslin, M., Henriksson, R., Bergstrom, P., Ungerstedt, U., Bergenheim, A.T., 2003. Baseline levels of glucose metabolites, glutamate and glycerol in malignant glioma assessed by stereotactic microdialysis. *J. Neurooncol.* 61, 151–160.
- Rossi, D., Brambilla, L., Valori, C.F., Roncoroni, C., Crugnola, A., Yokota, T., Bredesen, D.E., Volterra, A., 2008. Focal degeneration of astrocytes in amyotrophic lateral sclerosis. *Cell Death Differ.* 15, 1691–1700.
- Roth, T.L., Nayak, D., Atanasijevic, T., Koretsky, A.P., Latour, L.L., McGavern, D.B., 2014. Transcranial amelioration of inflammation and cell death after brain injury. *Nature* 505, 223–228.
- Roze, E., Saudou, F., Caboche, J., 2008. Pathophysiology of Huntington's disease: from huntingtin functions to potential treatments. *Curr. Opin. Neurol.* 21, 497–503.
- Saijo, K., Winner, B., Carson, C.T., Collier, J.G., Boyer, L., Rosenfeld, M.G., Gage, F.H., Glass, C.K., 2009. A Nurr1/CoREST pathway in microglia and astrocytes protects dopaminergic neurons from inflammation-induced death. *Cell* 137, 47–59.
- Sanacora, G., Banasr, M., 2013. From pathophysiology to novel antidepressant drugs: glial contributions to the pathology and treatment of mood disorders. *Biol. Psychiatry* 73, 1172–1179.
- Sari, Y., Sreemantula, S.N., Lee, M.R., Choi, D.S., 2013. Ceftriaxone treatment affects the levels of GLT1 and ENT1 as well as ethanol intake in alcohol-preferring rats. *J. Mol. Neurosci.* 51, 779–787.
- Sathe, K., Maetzler, W., Lang, J.D., Mounsey, R.B., Fleckenstein, C., Martin, H.L., Schulte, C., Mustafa, S., Synofzik, M., Vukovic, Z., Itoharu, S., Berg, D., Teismann, P., 2012. S100B is increased in Parkinson's disease and ablation protects against MPTP-induced toxicity through the RAGE and TNF-alpha pathway. *Brain* 135, 3336–3347.
- Sayre, N.L., Chen, Y., Sifuentes, M., Stoveken, B., Lechleiter, J.D., 2014. Purinergic receptor stimulation decreases ischemic brain damage by energizing astrocyte mitochondria. In: Parpura, V., Verkhratsky, A. (Eds.), *Glutamate and ATP at the Interface of Metabolism and Signaling in the Brain*. Springer, Cham/Heidelberg/New York/Dordrecht/London, pp. 121–150.
- Schitine, C., Nogaroli, L., Costa, M.R., Hedin-Pereira, C., 2015. Astrocyte heterogeneity in the brain: from development to disease. *Front. Cell Neurosci.* 9, 76.
- Schmitt, A., Steyskal, C., Bernstein, H.G., Schneider-Axmann, T., Parlapani, E., Schaeffer, E.L., Gattaz, W.F., Bogerts, B., Schmitz, C., Falkai, P., 2009. Stereological investigation of the posterior part of the hippocampus in schizophrenia. *Acta Neuropathol.* 117, 395–407.
- Schnieder, T.P., Dwork, A.J., 2011. Searching for neuropathology: gliosis in schizophrenia. *Biol. Psychiatry* 69, 134–139.
- Scholl, U.I., Choi, M., Liu, T., Ramaekers, V.T., Hausler, M.G., Grimmer, J., Tobe, S.W., Farhi, A., Nelson-Williams, C., Lifton, R.P., 2009. Seizures, sensorineural deafness, ataxia, mental retardation, and electrolyte imbalance (SeSAME syndrome) caused by mutations in KCNJ10. *Proc. Natl. Acad. Sci. U. S. A.* 106, 5842–5847.
- Schwarz, R., Hunter, C.A., 2007. *Toxoplasma gondii* and schizophrenia: linkage through astrocyte-derived kynurenic acid? *Schizophr. Bull.* 33, 652–653.
- Scofield, M.D., Boger, H.A., Smith, R.J., Li, H., Haydon, P.G., Kalivas, P.W., 2015. Gq-DREADD selectively initiates glial glutamate release and inhibits cue-induced cocaine seeking. *Biol. Psychiatry* 78, 441–451.
- Selkoe, D.J., 2001. Alzheimer's disease: genes, proteins, and therapy. *Physiol. Rev.* 81, 741–766.
- Sequeira, A., Mamdani, F., Ernst, C., Vawter, M.P., Bunney, W.E., Lebel, V., Rehal, S., Klempf, T., Gratton, A., Benkelfat, C., Rouleau, G.A., Mechawar, N., Turecki, G., 2009. Global brain gene expression analysis links glutamatergic and GABAergic alterations to suicide and major depression. *PLoS ONE* 4, e6585.
- Shan, D., Lucas, E.K., Drummond, J.B., Haroutunian, V., Meador-Woodruff, J.H., McCullumsmith, R.E., 2013. Abnormal expression of glutamate transporters in temporal lobe areas in elderly patients with schizophrenia. *Schizophr. Res.* 144, 1–8.
- Shan, D., Mount, D., Moore, S., Haroutunian, V., Meador-Woodruff, J.H., McCullumsmith, R.E., 2014a. Abnormal partitioning of hexokinase 1 suggests disruption of a glutamate transport protein complex in schizophrenia. *Schizophr. Res.* 154, 1–13.
- Shan, D., Yates, S., Roberts, R.C., McCullumsmith, R.E., 2014b. Astroglia and severe mental illness: a role for glutamate microdomains. In: Parpura, V., Verkhratsky, A. (Eds.), *Pathological Potential of Neuroglia: Possible New Targets for Medical Intervention*. Springer, New York/Heidelberg/Dordrecht/London, pp. 373–395.
- Shin, J.Y., Fang, Z.H., Yu, Z.X., Wang, C.E., Li, S.H., Li, X.J., 2005. Expression of mutant huntingtin in glial cells contributes to neuronal excitotoxicity. *J. Cell Biol.* 171, 1001–1012.
- Siddiqui, A., Mallajosyula, J.K., Rane, A., Andersen, J.K., 2011. Ability to delay neuropathological events associated with astrocytic MAO-B increase in a Parkinsonian mouse model: implications for early intervention on disease progression. *Neurobiol. Dis.* 43, 527–532.
- Simpson, J.E., Ince, P.G., Lacey, G., Forster, G., Shaw, P.J., Matthews, F., Savva, G., Brayne, C., Wharton, S.B., 2010. Astrocyte phenotype in relation to Alzheimer-type pathology in the ageing brain. *Neurobiol. Aging* 31, 578–590.
- Singhrao, S.K., Thomas, P., Wood, J.D., MacMillan, J.C., Neal, J.W., Harper, P.S., Jones, A.L., 1998. Huntingtin protein colocalizes with lesions of neurodegenerative diseases: an investigation in Huntingtin's, Alzheimer's, and Pick's diseases. *Exp. Neurol.* 150, 213–222.
- Skuja, S., Groma, V., Smame, L., 2012. Alcoholism and cellular vulnerability in different brain regions. *Ultrastruct. Pathol.* 36, 40–47.
- Smaga, I., Niedzielska, E., Gawlik, M., Moniczewski, A., Krzek, J., Przegalinski, E., Pera, J., Filip, M., 2015. Oxidative stress as an etiological factor and a potential treatment target of psychiatric disorders. Part 2. Depression, anxiety, schizophrenia and autism. *Pharmacol. Rep.* 67, 569–580.
- Sofroniew, M.V., 2005. Reactive astrocytes in neural repair and protection. *Neuroscientist* 11, 400–407.
- Sofroniew, M.V., 2009. Molecular dissection of reactive astrogliosis and glial scar formation. *Trends Neurosci.* 32, 638–647.
- Song, P., Zhao, Z.Q., 2001. The involvement of glial cells in the development of morphine tolerance. *Neurosci. Res.* 39, 281–286.
- Song, Y.J., Halliday, G.M., Holton, J.L., Lashley, T., O'Sullivan, S.S., McCann, H., Lees, A.J., Ozawa, T., Williams, D.R., Lockhart, P.J., Revesz, T.R., 2009. Degeneration in different parkinsonian syndromes relates to astrocyte type and astrocyte protein expression. *J. Neuropathol. Exp. Neurol.* 68, 1073–1083.
- Sosunov, A.A., Guilfoyle, E., Wu, X., McKhann 2nd, G.M., Goldman, J.E., 2013. Phenotypic conversions of "protoplasmic" to "reactive" astrocytes in Alexander disease. *J. Neurosci.* 33, 7439–7450.
- Soucek, T., Cumming, R., Dargusch, R., Maher, P., Schubert, D., 2003. The regulation of glucose metabolism by HIF-1 mediates a neuroprotective response to amyloid beta peptide. *Neuron* 39, 43–56.
- Sreedharan, J., Blair, I.P., Tripathi, V.B., Hu, X., Vance, C., Rogelj, B., Ackerley, S., Durnall, J.C., Williams, K.L., Buratti, E., Baralle, F., de Belleruche, J., Mitchell, J.D., Leigh, P.N., Al-Chalabi, A., Miller, C.C., Nicholson, S., Shaw, C.E., 2008. TDP-43 mutations in familial and sporadic amyotrophic lateral sclerosis. *Science* 319, 1668–1672.
- Sriram, K., Benkovic, S.A., Hebert, M.A., Miller, D.B., O'Callaghan, J.P., 2004. Induction of gp130-related cytokines and activation of JAK2/STAT3 pathway in astrocytes precedes up-regulation of glial fibrillary acidic protein in the 1-methyl-4-phenyl-1,2,3,6-tetrahydropyridine model of neurodegeneration: key signaling pathway for astrogliosis in vivo? *J. Biol. Chem.* 279, 19936–19947.
- Steinhauser, C., Grunnet, M., Carmignoto, G., 2015. Crucial role of astrocytes in temporal lobe epilepsy. *Neuroscience*, <http://dx.doi.org/10.1016/j.neuroscience.2014.12.047>.
- Stenovec, M., Milosevic, M., Petrusic, V., Potokar, M., Stevic, Z., Prebil, M., Kreft, M., Trkov, S., Andjus, P.R., Zorec, R., 2011. Amyotrophic lateral sclerosis immunoglobulin G enhance the mobility of Lysotracker-labelled vesicles in cultured rat astrocytes. *Acta Physiol. (Oxf.)* 203, 457–471.
- Stenzel, W., Soltek, S., Schluter, D., Deckert, M., 2004. The intermediate filament GFAP is important for the control of experimental murine *Staphylococcus aureus*-induced brain abscess and *Toxoplasma encephalitis*. *J. Neuropathol. Exp. Neurol.* 63, 631–640.
- Stiles, C.D., Rowitch, D.H., 2008. Glioma stem cells: a midterm exam. *Neuron* 58, 832–846.
- Struys-Ponsar, C., Guillard, O., van den Bosch de Aguilar, P., 2000. Effects of aluminum exposure on glutamate metabolism: a possible explanation for its toxicity. *Exp. Neurol.* 163, 157–164.
- Suarez-Fernandez, M.B., Soldado, A.B., Sanz-Medel, A., Vega, J.A., Novelli, A., Fernandez-Sanchez, M.T., 1999. Aluminum-induced degeneration of astrocytes occurs via apoptosis and results in neuronal death. *Brain Res.* 835, 125–136.
- Suarez, I., Bodega, G., Ramos, J.A., Fernandez-Ruiz, J.J., Fernandez, B., 2000. Neuronal and astroglial response to pre- and perinatal exposure to delta-9-tetrahydrocannabinol in the rat substantia nigra. *Dev. Neurosci.* 22, 253–263.
- Sun, J.D., Liu, Y., Yuan, Y.H., Li, J., Chen, N.H., 2012. Gap junction dysfunction in the prefrontal cortex induces depressive-like behaviors in rats. *Neuropsychopharmacology* 37, 1305–1320.
- Takano, T., Lin, J.H., Arcuino, G., Gao, Q., Yang, J., Nedergaard, M., 2001. Glutamate release promotes growth of malignant gliomas. *Nat. Med.* 7, 1010–1015.
- Tanaka, K., Watase, K., Manabe, T., Yamada, K., Watanabe, M., Takahashi, K., Iwama, H., Nishikawa, T., Ichihara, N., Kikuchi, T., Okuyama, S., Kawashima, N., Hori, S., Takimoto, M., Wada, K., 1997. Epilepsy and exacerbation of brain injury in mice lacking the glutamate transporter GLT-1. *Science* 276, 1699–1702.
- Tang, G., Xu, Z., Goldman, J.E., 2006. Synergistic effects of the SAPK/JNK and the proteasome pathway on glial fibrillary acidic protein (GFAP) accumulation in Alexander disease. *J. Biol. Chem.* 281, 38634–38643.
- Terry, R.D., 2000. Cell death or synaptic loss in Alzheimer disease. *J. Neuropathol. Exp. Neurol.* 59, 1118–1119.
- Tidyman, W.E., Rauen, K.A., 2009. The RASopathies: developmental syndromes of Ras/MAPK pathway dysregulation. *Curr. Opin. Genet. Dev.* 19, 230–236.
- Tong, X., Ao, Y., Faas, G.C., Nwaobi, S.E., Xu, J., Hausteiner, M.D., Anderson, M.A., Mody, I., Olsen, M.L., Sofroniew, M.V., Khakh, B.S., 2014. Astrocyte Kir4.1 ion channel

- deficits contribute to neuronal dysfunction in Huntington's disease model mice. *Nat. Neurosci.* 17, 694–703.
- Traynelis, S.F., Dingledine, R., 1988. Potassium-induced spontaneous electrographic seizures in the rat hippocampal slice. *J. Neurophysiol.* 59, 259–276.
- Valori, C.F., Brambilla, L., Rossi, D., 2014. Amyotrophic lateral sclerosis: a glial perspective. In: Parpura, V., Verkhratsky, A. (Eds.), *Pathological Potential of Neuroglia. Possible New Targets for Medical Intervention*. Springer, New York/Heidelberg/Dordrecht/London, pp. 231–264.
- Vance, C., Rogelj, B., Hortobagyi, T., De Vos, K.J., Nishimura, A.L., Sreedharan, J., Hu, X., Smith, B., Ruddy, D., Wright, P., Ganesalingam, J., Williams, K.L., Tripathi, V., Al-Saraj, S., Al-Chalabi, A., Leigh, P.N., Blair, I.P., Nicholson, G., de Belleruche, J., Gallo, J.M., Miller, C.C., Shaw, C.E., 2009. Mutations in *FUS*, an RNA processing protein, cause familial amyotrophic lateral sclerosis type 6. *Science* 323, 1208–1211.
- Vargas, M.R., Johnson, D.A., Sirkis, D.W., Messing, A., Johnson, J.A., 2008. *Nrf2* activation in astrocytes protects against neurodegeneration in mouse models of familial amyotrophic lateral sclerosis. *J. Neurosci.* 28, 13574–13581.
- Verkhratsky, A., Butt, A.M., 2013. *Glial Physiology and Pathophysiology*. Wiley-Blackwell, Chichester.
- Verkhratsky, A., Marulte, A., Rodriguez-Arellano, J.J., Nordberg, A., 2014a. Glial asthenia and functional paralysis: a new perspective on neurodegeneration and Alzheimer's disease. *Neuroscientist*, <http://dx.doi.org/10.1177/1073858414547132>.
- Verkhratsky, A., Nedergaard, M., 2014. Astroglial cradle in the life of the synapse. *Philos. Trans. R. Soc. Lond. B: Biol. Sci.* 369, 20130595.
- Verkhratsky, A., Olabarria, M., Noristani, H.N., Yeh, C.Y., Rodriguez, J.J., 2010. Astrocytes in Alzheimer's disease. *Neurotherapeutics* 7, 399–412.
- Verkhratsky, A., Parpura, V., Pekna, M., Pekny, M., Sofroniew, M., 2014b. Glia in the pathogenesis of neurodegenerative diseases. *Biochem. Soc. Trans.* 42, 1291–1301.
- Verkhratsky, A., Reyes, R.C., Parpura, V., 2014c. TRP channels coordinate ion signalling in astroglia. *Rev. Physiol. Biochem. Pharmacol.* 166, 1–22.
- Verkhratsky, A., Rodriguez, J.J., Parpura, V., 2013. Astroglia in neurological diseases. *Fut. Neurol.* 8, 149–158.
- Verkhratsky, A., Rodriguez, J.J., Steardo, L., 2014d. Astroglipathology: a central element of neuropsychiatric diseases? *Neuroscientist* 20, 576–588.
- Vonsattel, J.P., Myers, R.H., Stevens, T.J., Ferrante, R.J., Bird, E.D., Richardson Jr., E.P., 1985. Neuropathological classification of Huntington's disease. *J. Neuropathol. Exp. Neurol.* 44, 559–577.
- Wang, F., Du, T., Liang, C., Verkhratsky, A., Peng, L., 2015. Ammonium increases Ca^{2+} signalling and upregulates expression of $Ca_v1.2$ gene in astrocytes in primary cultures and in the in vivo brain. *Acta Physiol. (Oxf.)* 214, 261–274.
- Wang, L., Gutmann, D.H., Roos, R.P., 2011. Astrocyte loss of mutant *SOD1* delays ALS disease onset and progression in G85R transgenic mice. *Hum. Mol. Genet.* 20, 286–293.
- Wang, Y., Zaveri, H.P., Lee, T.S., Eid, T., 2009. The development of recurrent seizures after continuous intrahippocampal infusion of methionine sulfoximine in rats: a video-intracranial electroencephalographic study. *Exp. Neurol.* 220, 293–302.
- Weber, M., Scherf, N., Kahl, T., Braumann, U.D., Scheibe, P., Kuska, J.P., Bayer, R., Buttner, A., Franke, H., 2013. Quantitative analysis of astrogliosis in drug-dependent humans. *Brain Res.* 1500, 72–87.
- Webster, M.J., Knable, M.B., Johnston-Wilson, N., Nagata, K., Inagaki, M., Yolken, R.H., 2001. Immunohistochemical localization of phosphorylated glial fibrillary acidic protein in the prefrontal cortex and hippocampus from patients with schizophrenia, bipolar disorder, and depression. *Brain Behav. Immun.* 15, 388–400.
- Weng, Y.C., Kriz, J., 2007. Differential neuroprotective effects of a minocycline-based drug cocktail in transient and permanent focal cerebral ischemia. *Exp. Neurol.* 204, 433–442.
- Wilhelmsson, U., Eliasson, C., Bjerkvig, R., Pekny, M., 2003. Loss of GFAP expression in high-grade astrocytomas does not contribute to tumor development or progression. *Oncogene* 22, 3407–3411.
- Wilson, J.X., Peters, C.E., Sitar, S.M., Daoust, P., Gelb, A.W., 2000. Glutamate stimulates ascorbate transport by astrocytes. *Brain Res.* 858, 61–66.
- Wise, D.R., Thompson, C.B., 2010. Glutamine addiction: a new therapeutic target in cancer. *Trends Biochem. Sci.* 35, 427–433.
- Wisniewski, K.E., Wisniewski, H.M., Wen, G.Y., 1985. Occurrence of neuropathological changes and dementia of Alzheimer's disease in Down's syndrome. *Ann. Neurol.* 17, 278–282.
- Wu, C.H., Fallini, C., Ticozzi, N., Keagle, P.J., Sapp, P.C., Piotrowska, K., Lowe, P., Koppers, M., McKenna-Yasek, D., Baron, D.M., Kost, J.E., Gonzalez-Perez, P., Fox, A.D., Adams, J., Taroni, F., Tiloca, C., Leclerc, A.L., Chafe, S.C., Mangroo, D., Moore, M.J., Zitzewitz, J.A., Xu, Z.S., van den Berg, L.H., Glass, J.D., Siciliano, G., Cirulli, E.T., Goldstein, D.B., Salachas, F., Meininger, V., Rossoll, W., Ratti, A., Gellera, C., Bosco, D.A., Bassell, G.J., Silani, V., Drory, V.E., Brown Jr., R.H., Landers, J.E., 2012. Mutations in the profilin 1 gene cause familial amyotrophic lateral sclerosis. *Nature* 488, 499–503.
- Xia, M., Abazyan, S., Jouroukhin, Y., Pletnikov, M., 2014. Behavioral sequelae of astrocyte dysfunction: focus on animal models of schizophrenia. *Schizophr. Res.*, <http://dx.doi.org/10.1016/j.schres.2014.10.044>.
- Yamanaka, K., Chun, S.J., Boillee, S., Fujimori-Tonou, N., Yamashita, H., Gutmann, D.H., Takahashi, R., Misawa, H., Cleveland, D.W., 2008. Astrocytes as determinants of disease progression in inherited amyotrophic lateral sclerosis. *Nat. Neurosci.* 11, 251–253.
- Yang, F.Y., Lee, Y.S., Cherng, C.G., Cheng, L.Y., Chang, W.T., Chuang, J.Y., Kao, G.S., Yu, L., 2013. D-Cycloserine, sarcosine and D-serine diminish the expression of cocaine-induced conditioned place preference. *J. Psychopharmacol.* 27, 550–558.
- Yang, Y., Hentati, A., Deng, H.X., Dababagh, O., Sasaki, T., Hirano, M., Hung, W.Y., Ouahchi, K., Yan, J., Azim, A.C., Cole, N., Gascon, G., Yagmour, A., Ben-Hamida, M., Pericak-Vance, M., Hentati, F., Siddique, T., 2001. The gene encoding alsin, a protein with three guanine-nucleotide exchange factor domains, is mutated in a form of recessive amyotrophic lateral sclerosis. *Nat. Genet.* 29, 160–165.
- Ye, Z.C., Sontheimer, H., 1999. Glioma cells release excitotoxic concentrations of glutamate. *Cancer Res.* 59, 4383–4391.
- Yeh, C.Y., Vadhvana, B., Verkhratsky, A., Rodriguez, J.J., 2011. Early astrocytic atrophy in the entorhinal cortex of a triple transgenic animal model of Alzheimer's disease. *ASN Neuro* 3, 271–279.
- Yeh, C.Y., Verkhratsky, A., Terzieva, S., Rodriguez, J.J., 2013. Glutamine synthetase in astrocytes from entorhinal cortex of the triple transgenic animal model of Alzheimer's disease is not affected by pathological progression. *BioGerontology* 14, 777–787.
- Yin, Z., Milatovic, D., Aschner, J.L., Syversen, T., Rocha, J.B., Souza, D.O., Sidoryk, M., Albrecht, J., Aschner, M., 2007. Methylmercury induces oxidative injury, alterations in permeability and glutamine transport in cultured astrocytes. *Brain Res.* 1131, 1–10.
- Zamanian, J.L., Xu, L., Foo, L.C., Nouri, N., Zhou, L., Giffard, R.G., Barres, B.A., 2012. Genomic analysis of reactive astrogliosis. *J. Neurosci.* 32, 6391–6410.
- Zeidan-Chulia, F., Salmina, A.B., Malinovskaya, N.A., Noda, M., Verkhratsky, A., Moreira, J.C., 2014. The glial perspective of autism spectrum disorders. *Neurosci. Biobehav. Rev.* 38, 160–172.
- Zhang, L., Li, L., Wang, B., Qian, D.M., Song, X.M., Hu, M., 2013. Human cytomegalovirus infection modulates thrombospondins 1 and 2 in primary fetal astrocytes. *Neuroreport* 24, 526–535.
- Zhang, L., Li, L., Wang, B., Qian, D.M., Song, X.X., Hu, M., 2014. HCMV induces dysregulation of glutamate uptake and transporter expression in human fetal astrocytes. *Neurochem. Res.* 39, 2407–2418.
- Zhang, Y., Jin, Y., Behr, M.J., Feustel, P.J., Morrison, J.P., Kimelberg, H.K., 2005. Behavioral and histological neuroprotection by tamoxifen after reversible focal cerebral ischemia. *Exp. Neurol.* 196, 41–46.
- Zhao, Y., Rempel, D.A., 2010. Targeting astrocytes for stroke therapy. *Neurotherapeutics* 7, 439–451.
- Zheng, Z., Diamond, M.I., 2012. Huntington disease and the huntingtin protein. *Prog. Mol. Biol. Transl. Sci.* 107, 189–214.
- Zlokovic, B.V., 2008. The blood–brain barrier in health and chronic neurodegenerative disorders. *Neuron* 57, 178–201.
- Zonta, M., Angulo, M.C., Gobbo, S., Rosengarten, B., Hossmann, K.A., Pozzan, T., Carmignoto, G., 2003. Neuron-to-astrocyte signaling is central to the dynamic control of brain microcirculation. *Nat. Neurosci.* 6, 43–50.
- Zorec, R., Araque, A., Carmignoto, G., Haydon, P.G., Verkhratsky, A., Parpura, V., 2012. Astroglial excitability and gliotransmission: an appraisal of Ca^{2+} as a signalling route. *ASN Neuro* 4, e00080.